



**Fairbanks  
North  
Star  
Borough**

**Community Research Center  
PO Box 71267  
Fairbanks, Alaska 99707-1267  
(907) 459-1000**

# **COMMUNITY RESEARCH QUARTERLY**

**A Socio - Economic Review**



**Summer 2014**

**Volume XXXVII, No. 2**

# COMMUNITY RESEARCH CENTER

The Community Research Center is located on the second floor  
of the Borough Administration Building  
at 809 Pioneer Road.

Office and Research Library hours are Monday through Friday  
8:00 a.m. to Noon and 1:00 p.m. to 5:00 p.m.



## CITATION

Tabular and summary information contained herein may be reproduced without special permission. It is requested that any information reproduced be cited as follows: Fairbanks North Star Borough, Community Research Center, *Community Research Quarterly*, Vol. XXXVII, No. 2, 2014.

## ACKNOWLEDGMENTS

The Community Research Center would like to thank the many persons, businesses, government agencies and organizations who contributed to this report. FNSB has established a policy of equal opportunity in employment, service, programs and activities.

## COVER PAGE

Tanana Lakes Recreation Area is a 750-acre multi-use park lying south of the City of Fairbanks along the Tanana River. The area once used to extract gravel is now provides a convenient location for year round recreation. <sup>1</sup> Photo taken by Steve Taylor, Project Coordinator of the Fairbanks North Star Borough, Department of Parks and Recreation.

<sup>1</sup> More information about the Tanana Lakes Recreation Area can be found at the Fairbanks North Star Borough Parks and Recreation website:  
<http://co.fairbanks.ak.us/parksandrecreation/facilities/TLRA/>

**FAIRBANKS NORTH STAR BOROUGH**  
**COMMUNITY RESEARCH QUARTERLY**  
**A Review of Socio - Economic Trends**

**Volume XXXVII, Number 2**  
**Summer 2014**

**BOROUGH MAYOR**  
Luke Hopkins

**COMMUNITY PLANNING DEPARTMENT**  
Bernardo Hernandez, Director (retired May 2014)

**COMMUNITY RESEARCH CENTER**  
Jennifer K. Nachtrieb, (ed.) Documentation Coordinator II

**Fairbanks North Star Borough, Community Research Center**  
**PO Box 71267, Fairbanks, Alaska 99707-1267**  
**Phone: (907) 459-1212; e-mail: jnachtrieb@fnsb.us**  
**WEBSITE: <http://co.fairbanks.ak.us/CommunityPlanning/CRC>**

---

# Table of Contents

---

	<u>Page</u>
<b>A Spotlight on Community Economic Trends</b>	<b>i-iv</b>
<b>Fairbanks Economy at a Glance</b>	<b>1-2</b>
<b>Economic Indicators</b>	<b>3-25</b>
Bank Deposit & Loan Summary	3
Bankruptcies Filed	4
Notices of Default	5
Foreclosures	6
Fairbanks International Airport Freight	7
Fairbanks International Airport Transit Freight	8
Fairbanks International Airport Revenue Landings	9
Fairbanks International Airport Passengers	10
Alaska Highway Statewide Entering Passengers	11
Alaska Highway Statewide Exiting Passengers	11
Alaska Highway Statewide Net Annual Migration Trends	12
Alaska Highway Statewide Net Monthly Migration	12
Hotel / Motel Room Receipts	13
Second Quarter Hotel / Motel Room Receipts	13
Annual Hotel / Motel Room Receipts	14
University of Alaska Museum Visitors	15
Property Tax Mill Rates	16
Assessed Value of Property	17
Assessed Value of Pipeline Related Property	18
Alcoholic Beverage Tax Revenue	19
Tobacco Excise Tax Revenue	20
Alaska's Mineral Industry 2012--Executive Summary	21-25
	
<b>Employment</b>	<b>26-31</b>
Civilian Labor Force Unemployment Rates	26-27
Average Monthly Employment Estimates by Sector	27
Average Monthly Employment Estimates by Industry	28
Annual Average Monthly Employment by Industry	29
Annual Average Monthly Wage by Industry	30
Quarterly Census of Employment and Wages by Industry	31

## Table of Contents

	<u>Page</u>
<b>Housing</b>	<b>32-37</b>
Apartment/Multi-Plex Vacancy Rates	32
Rental Housing Units Available	33
Average Monthly Rents for Available Housing Units	34
Residential Housing Sales	35
Annual Average Residential Housing Sales	36
New Structures By Unit Annual Report	37
<b>Cost of Living</b>	<b>38-44</b>
C2ER Cost of Living Index	38-39
Consumer Price Index-U for All Items	39-40
Consumer Price Index-U (Anchorage)	40
Consumer Price Index-U for All Items (U.S. City Average)	40
Consumer Price Index-U for All Urban Consumers, Major Components (Anchorage)	41
Consumer Price Index-U for All Urban Consumers, Major Components (U.S. City Average)	42
Cost of Food At Home For A Week	43
Average Self-service Unleaded Gasoline Prices	44
<b>Population &amp; Social Conditions</b>	<b>45-49</b>
Population Counts & Estimates	45
Military Population	46
Military Retiree & Grey Area Reservist/Retiree Population	47
Military Survivor/Annuitant Population	47
Regulated Child Care	48
Education	48
Criminal Offense Summary	49

### **NOTE FROM THE EDITOR:**

If you have a change in your address information please advise this office as soon as possible so the database can be altered before the next mailing. In an effort to conserve on postage costs, if your issue of the *Community Research Quarterly* is returned for any reason, we will not attempt to resend. Thank you for your cooperation.

***A SPOTLIGHT***  
***ON***  
***COMMUNITY ECONOMIC TRENDS***

**SPOTLIGHT SOURCE:** *Flint Hills Refinery Closure Makes For Higher-Priced Asphalt*,  
By Elwood Brehmer, Alaska Journal of Commerce, September 4, 2014. Elwood Brehmer  
can be reached at [elwood.brehmer@alaskajournal.com](mailto:elwood.brehmer@alaskajournal.com).

Read more at the Alaska Journal of Commerce website: <http://www.alaskajournal.com>.

# Flint Hills refinery closure makes for higher-priced asphalt

By Elwood Brehmer, Alaska Journal of Commerce  
Published: 2014.09.04 10:27 AM

As paving season peaks, getting asphalt to construction sites across Alaska has become more complicated and expensive since Flint Hills Resources closed its North Pole oil refinery.

The real price of asphalt oil has spiked about 20 percent over last year — about \$150 per ton — for construction projects in Fairbanks and more remote locations, Exclusive Paving General Manager Travis Cline said.

The reason for the cost increase is asphalt oil used for state Transportation Department Northern Region projects must now be trucked up from Tesoro's Nikiski refinery.

Tracked bi-weekly by DOT, the base, or "rack" price of asphalt oil is actually less than last year. Through Sept. 4 the rack price was \$600 per ton and had been steady since June 20, as opposed to \$619 per ton for the 2013 paving season.

While work on road projects occurs all summer long, most paving is done in late summer and early fall.

"Those numbers, that they use for that index, that is what they get direct from the manufacturer," Cline said. "That price doesn't take into account the trucking. That's why when it finally gets to our jobs here in Northern Region it's quite a bit more expensive."

DOT Northern Region Construction Engineer Frank Ganley said the state was initially hearing that asphalt was running about \$100 more per ton than was projected in many of the contracts it has with construction companies, but added that the \$150 figure is reasonable as well.

"A lot of that information we just don't have yet from our contractors," Ganley said.

Contracts for this summer's projects were bid and awarded last winter and early spring, prior to when Flint Hills announced it would close its North Pole refinery, which happened June 1.

He estimated Northern Region work would use about 25,000 tons of asphalt oil this year, meaning it could cost the state and its contractors combined up to \$3.75 million more than projected.

Asphalt oil typically makes up about 6 percent of the final product that is laid on the road surface. The rest is mostly sand and gravel aggregates.

DOT road construction contracts include a price adjustment clause that requires contractors to share in the added cost, up to 7.5 percent, Ganley said.

"That cause was put in there to deal with the volatility of oil prices seven and eight years ago," he said.

Cline said Exclusive Paving happened to get two of the largest resurfacing jobs in Fairbanks — Airport Way and the Johansen Expressway — at the wrong time.

“What a year to get have the big paving jobs when the price of (asphalt) oil goes up like that,” he said.

Bids for future work in the region will include the new, added cost of transporting asphalt oil from the Kenai Peninsula, rather than from an Interior source, he said.

Preseason fears about Tesoro being able to meet the asphalt needs of the entire mainland of Alaska have been quelled, according to state officials and paving companies. This spring, a Tesoro spokesman said the company would not

have a problem meeting the demand.

Southeast paving projects are supplied with asphalt that is shipped up from Seattle.

While supply from Tesoro has not been an issue, Lane Keator, Carlile Transportation System’s Fairbanks terminal manager, said the logistics of the trucking operation from Nikiski

have contributed to the cost.

“The biggest challenge is probably maintaining the heat,” Keator said. “It’s loaded hot in Nikiski and it’s a 12-hour, one-way trip minimum from Nikiski to Fairbanks.”

Highly viscous asphalt oil is heated to 300 degrees Fahrenheit or more keep it liquid.

Keator said Carlile and other companies that haul asphalt oil to the Interior now have to pump it into heated tanks once they get to Fairbanks or North Pole, allow it to reheat and then pump it back into the tanker trucks before it is sent to its final destination, which could be as far away as Deadhorse or Eagle.

Luckily, the State of Alaska allows truckers to drive 15 hours per day, as opposed to the 12-hour limit many other states have, he added. However, drivers hauling asphalt north must “start fresh” in Nikiski, he said.

Tesoro has the ability to load about one truck per hour with asphalt oil, and the added demand has required cooperation between dispatch centers to make sure nobody is stuck in line at the refinery, Keator said.

“The trucking companies have worked well together to make sure we don’t step on each others’ toes — to make sure nobody has to wait” at the asphalt rack, he said.



Prices for asphalt have spiked this construction season following the closure of the Flint Hills Resources refinery in North Pole. A 20 percent increase for projects around Fairbanks and remote areas is being driven by the additional costs of transporting asphalt oil from the Tesoro refinery in Nikiski.

Photo/Courtesy/Granite Construction Inc.



**THIS PAGE INTENTIONALLY BLANK**

# ECONOMY AT-A-GLANCE

Fairbanks North Star Borough

Economic Indicator	Current Data Period	One Period Ago	One Year Ago
Reporting Period	2nd Qtr '14	% Change from 1st Qtr. '14	% Change from 2nd Qtr. '13
<b>BANKING</b>			
Total Bank Deposits (millions of \$)	\$1,064.6	0.1%	4.0%
Total Bank Loans (millions of \$)	\$657.7	0.3%	-3.5%
<b>BANKRUPTCIES</b>			
Business	0	-100.0%	-
Non-Business	14	0.0%	-46.2%
<b>TRANSPORTATION</b>			
Fairbanks International Airport			
Incoming Freight (thousands of lbs.)	1,770	22.9%	-3.8%
Outgoing Freight (thousands of lbs.)	9,105	24.0%	-6.0%
Transit Freight (thousands of lbs.)	290	-57.5%	-57.1%
Revenue Landings	6,079	14.9%	-1.3%
Incoming Passengers	130,356	18.4%	10.4%
Outgoing Passengers	125,122	17.0%	-0.1%
Alaska Highway (statewide)			
Entering Passengers	33,961	368.6%	-8.7%
Exiting Passengers	20,731	289.0%	-13.9%
<b>EMPLOYMENT</b>			
Total Employment	39,500	5.3%	-2.0%
Mining and Logging	1,600	14.3%	-5.9%
Construction	2,600	36.8%	-3.7%
Manufacturing	600	0.0%	0.0%
Trade/Transportation/Utilities.	8,400	7.7%	2.4%
Information	500	0.0%	0.0%
Financial Activities	1,300	8.3%	0.0%
Professional & Business Services	2,100	5.0%	-25.0%
Education & Health Services	5,400	0.0%	0.0%
Leisure & Hospitality	4,200	10.5%	-2.3%
Other Services	1,200	0.0%	0.0%
Government	11,500	-1.7%	-0.9%

NOTE: Employment numbers rounded to nearest 100.

## Fairbanks Economy at a Glance

(continued)

Fairbanks North Star Borough

Economic Indicator	Current Data Period	One Period Ago	One Year Ago
<b>Reporting Period (annual/by qtr.)</b>			
<b>CONSTRUCTION</b>		Annual	
New Structures Annual Report (2013)	288	-	-31.4%
<b>Reporting Period (annual/by qtr.)</b>			
		2nd Qtr. '14	1st Qtr. '14      2nd Qtr. '13
<b>REAL ESTATE</b>			
Single Family Houses			
Number Sold	260	108.0%	52.0%
Average Price	\$220,232	14.7%	-3.3%
<b>RENTALS</b>			
Residential Rentals			
Rental Units Advertised	690	0.0%	70.8%
Average Rent (2 bdrm. apartment)	\$1,201	-1.2%	1.7%
<b>MILITARY</b>			
Military Active Duty Personnel (FFY2)	7,779	0.1%	-8.0%
Military Dependents (FFY2)	11,098	-0.8%	-7.4%
<b>POPULATION++</b>			
FNSB (Census annual)*	100,436	-	0.2%
City of Fairbanks* (annual)	32,324	-	0.9%
City of North Pole* (annual)	2,214	-	2.8%
FNSB (DCCED annual)^	99,632	-	-0.7%
FNSB (ADOL annual)**	99,632	-	-0.7%
City of Fairbanks** (annual)	32,204	-	0.4%
City of North Pole** (annual)	2,209	-	2.2%

**SOURCE:** (1) U.S. Census Bureau, Population Division, July 1st estimates. 2013 Population Estimates. PEPANNRES Table: *Annual Estimates of the Resident Population for Counties of Alaska: April 1, 2010 to July 1, 2013*, also Table: *Annual Estimates of the Resident Population in Alaska: now known as \*Intercensal Estimates of the Resident Population for Incorporated Places and Minor Civil Divisions: April 1, 2000 to July 1, 2013*, May 2014. Geographic change notes defined at: <http://www.census.gov>.

(2) Alaska Department of Labor and Workforce Development, Research and Analysis Section; and US Census Bureau. *Alaska Population Estimates by Borough, Census Area, City and Census Designated Place (CDP), 2010-2013*, Vintage 2013 ^, and *Alaska Population Estimates by Borough, Census Area, City and Census Designated Place (CDP), 2010-2013*, Vintage 2013 ^. All numbers are based on 2010 Census geography. ADOL website: <http://laborstats.alaska.gov>, February 2014.

(3) Alaska Department of Commerce, Community and Economic Development (DCCED), Division of Community and Regional Affairs, 2013 Commissioner Certified Estimates, January 15, 2013. DCCED Certified numbers may vary from ADOL population estimates as a result of the Population Estimate Appeal process available to incorporated communities on a yearly basis, as well as annual revisions by ADOL. Once certified, DCCED numbers may be applied for two consecutive calendar years. DCCED website: [http://www.commerce.state.ak.us/dca/commdb/CF\\_COMDB.htm](http://www.commerce.state.ak.us/dca/commdb/CF_COMDB.htm).

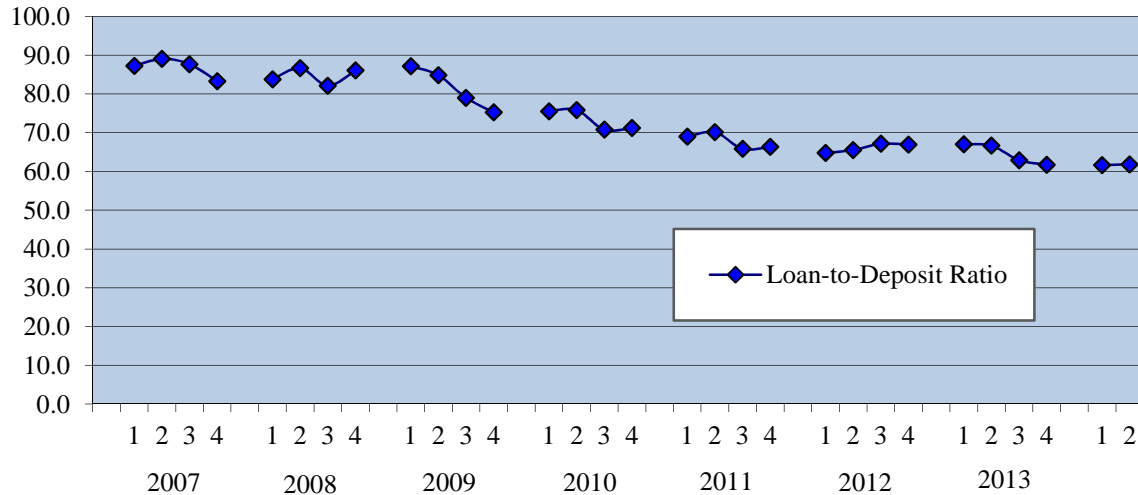
**NOTE:** The FNSB numbers include population for all communities within the Borough plus Fort Wainwright Army Base and Eielson Air Force Base.

\*\* U.S. Census and ADOL estimated numbers may be revised annually.

# ECONOMIC INDICATORS

## BANK DEPOSIT & LOAN SUMMARY

Fairbanks North Star Borough  
2007-2014, End of Quarter



## BANK DEPOSIT & LOAN SUMMARY

Fairbanks North Star Borough  
2007-2014

	2007	2008*	2009	2010	2011	2012	2013	2014
<b>Deposits</b>	-----Millions of Dollars-----							
March 31	\$699.9	\$751.1	\$786.9	\$873.8	\$938.3	\$957.0	\$1,007.8	\$1,063.7
June 30*	\$731.2	\$754.6	\$826.9	\$889.4	\$929.3	\$983.6	\$1,023.2	\$1,064.6
Sept. 30	\$752.7	\$807.4	\$847.0	\$927.1	\$966.3	\$1,021.4	\$1,064.8	
Dec. 31	\$762.1	\$782.3	\$887.0	\$949.2	\$960.3	\$1,014.6	\$1,073.7	
<b>Loans</b>	-----Millions of Dollars-----							
March 31^	\$610.5	\$629.1	\$685.4	\$660.0	\$646.9	\$619.5	\$675.3	\$655.9
June 30*	\$650.9	\$653.7	\$701.4	\$674.4	\$651.6	\$644.7	\$681.8	\$657.7
Sept. 30	\$659.8	\$662.9	\$669.0	\$656.0	\$636.1	\$685.6	\$669.8	
Dec. 31*	\$634.6	\$673.0	\$667.6	\$676.0	\$636.7	\$679.1	\$662.8	

**SOURCE:** Denali State Bank, First National Bank of Alaska, Mt. McKinley Bank, Northrim Bank, Wells Fargo Bank Alaska, N.A. (local branches), personal communications 2007-2014.

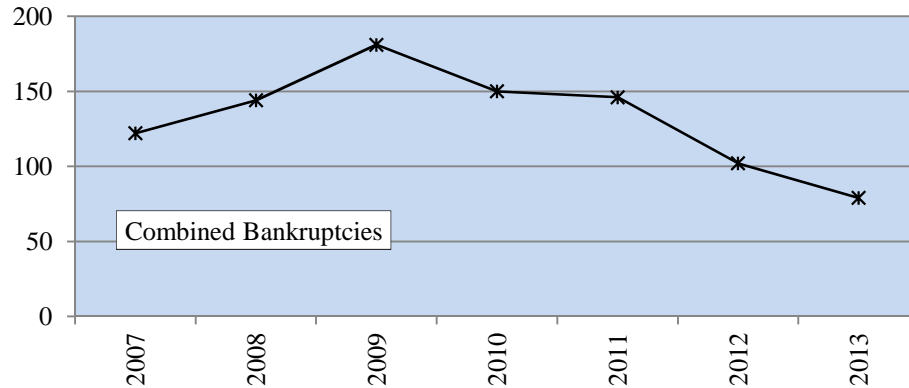
\* Adjustment made to data entered March-June 2008 in October 2008.

^ Calculation adjusted loan value only, November 2007.

## Economic Indicators

### TOTAL BANKRUPTCIES FILED

Alaska Fourth Judicial District, Fairbanks Office  
2007-2013



### BANKRUPTCIES FILED

Alaska Fourth Judicial District, Fairbanks Office  
2007-2014

	2007	2008	2009	2010*	2011*	2012*	2013*^	2014*
<b>Nonbusiness</b>								
1st Quarter	20	20	31	38	40	24	28	14
2nd Quarter	25	22	54	39	37	26	26	14
3rd Quarter	21	41	42	38	35	31	13	
4th Quarter	32	40	48	33	33	20	8	
<b>Total</b>	<b>98</b>	<b>123</b>	<b>175</b>	<b>148</b>	<b>145</b>	<b>101</b>	<b>75</b>	
% Change from Previous Year	9%	26%	42%	-15%	-2%	-30%	-26%	
<b>Business</b>								
1st Quarter	3	6	0	1	0	0	0	2
2nd Quarter	9	6	2	1	1	0	0	0
3rd Quarter	8	7	2	0	0	0	2	
4th Quarter	4	2	2	0	0	1	2	
<b>Total</b>	<b>24</b>	<b>21</b>	<b>6</b>	<b>2</b>	<b>1</b>	<b>1</b>	<b>4</b>	
% Change from Previous Year	41%	-13%	-71%	-67%	-50%	0%	300%	
<b>Combined Annual Total</b>	<b>122</b>	<b>144</b>	<b>181</b>	<b>150</b>	<b>146</b>	<b>102</b>	<b>79</b>	

**SOURCE:** U.S. Courts website: <http://www.akb.uscourts.gov>, and personal communications with FNSB Collections Department, 2007-2014.

**NOTE:** Revised formulas and chart, November 18, 2013.

Beginning in January 2009 the U.S. Bankruptcy Court changed the way they report bankruptcy cases. Due to staffing changes the information is no longer individually entered. They now use the nationwide formatting which does not sort business and non-business categories. FNSB will research the cases reported in effort to separate the two categories.

\* Beginning First Quarter 2010 bankruptcy records reflect refined research documenting through FNSB Collections Department who utilizes PACER (Public Access To Court Electronic Records).

^ 3rd Quarter 2013 numbers were changed to remove count of bankruptcy appeal case and correct a miscount in business cases.

## Economic Indicators

### NOTICES OF DEFAULT

Fairbanks Recording District\*  
2008-2014 ^

	2008	2009	2010	2011	2012	2013	2014	% Change 2013-14
January	21	20	20	14	8	30	29	-3%
February	17	32	26	33	20	20	18	-10%
March	16	26	15	27	25	13	12	-8%
April	16	21	21	22	14	16	17	6%
May	25	18	25	15	26	18	17	-6%
June	27	18	30	18	24	16	29	81%
July	25	34	22	13	23	25		
August	20	26	23	25	22	24		
September	27	20	26	21	27	17		
October	27	16	19	12	21	19		
November	14	16	11	14	12	19		
December	25	24	14	20	12	33		
<b>Total</b>	<b>260</b>	<b>271</b>	<b>252</b>	<b>234</b>	<b>234</b>	<b>250</b>		

**SOURCE:** Recorder's Office, Alaska Department of Natural Resources website: <http://www.dnr.alaska.gov>, 2008-2014.

**NOTE:** Notices of default indicate the terms of a Deed of Trust or Mortgage have been breached, i.e. delinquency of payments. The notices need not result in foreclosures because deficiencies can be corrected. There can be multiple notices if a default is corrected but the Deed of Trust or Mortgage terms are breached again in the future. A single notice can be for more than one parcel. Notices are tabulated by date of initiation.

^ Current data supersedes previous figures reported. The data presented only reflects the number of notice of defaults that have been recorded and does not reflect any effect of amendments, modifications or terminations of notice of defaults. Please contact the Community Research Center for any additional questions.

\* Fairbanks Recording District includes (*bolded communities may reside in the FNSB*) **A.G.M.(Camp)**; **Alaska Lodge**; Alatna; **Alder Creek**; **Alder Creek Camp**; Alexanders Village; Allakaket; **Amy Creek**; Arctic City (Aband); **Aurora Lodge**; Barlett; **P.O. (Ester)**; Bear Paw; Bearman Cabin; Beaver; Beaver Cr. Yukon; Bend S.C.; Berry; Berry Camp; Bettles; Bettles Field (Evansville); Biedermans Camp; Big Delta; Big Horn; Big Lake; Birch Creek; Black Jack Cabin; Bonanza; Bonanza Bar; Boundary; Burnt Paw; **Cache**; Canyon Creek Camp; Canyon Vil; Caribou; Caribou Bar; Caro; Cathedral Bluffs; Cathedral Rapids; Central; Chalkyitsik; Chandalar; Chapman; **Chatanika**; **Chena**; **Chena Hot Springs**; Chicken; Chisana; Christian; Circle; Circle Hot Springs; **Cleary Summit**; Coal Creek; Cold Foot; **College**; Crooked Creek; Dahten; Dall; Dalton; Delta Junction; Demarcation Pt; Diamond; Dome; Dome Creek; Donnelly; Doran; Dot Lake; Eagle; Eagle Creek; Eagle Village; **Eielson Air Force Base**; **Ester (Bartlett; P.O.)**; Evansville (Bettles Field); **Fairbanks**; **Fairbanks Creek Camp**; **Fiftysix Mile Cabin**; Fish Camp; Fishhook; Flume Creek; Fort Greely; Fort Hamlin; **Fort Wainwright**; Fort Yukon; Forty-Mile R.H. (Tetlin Junction); Fortysix Mile Cabin; Fossil Cr. S.C.; **Fox**; Franklin; Glacier; Glacier (Mine); Gold Bench; **Goldstream**; **Graehl**; Healy Lake; Heinie Creek; Henshaw Cabin; Horsfeld ; Jack Wade; Joe Ward Camp; John Herbert Village; Johnnie Frog Cabin; Johnson River; Joseph; Kantishna; Kochumstuk; **Lake Harding Store**; Lake Minchumina; Larson Cabin; Liberty; Lilywig Creek; Livengood; Log Cabin Inn; Mansfield Village; **Martin**; McCallum; Miller House; Millers Camp (Aband); Millers R.H.; Montana Creek Camp; **Moose Creek**; Mudbank Cabin; **Murphy Dome**; Muskeg; Myrtle Creek; Nabesna; Nabesna Village; Nation (Aband); Ninemile Cabin; Nineteen Mile; Nolan; **North Pole**; North Slope; Northway; Northway Junction; Old Camp; Old Rampart; **Old Saulich**; **Olnes**; Oscars Cabin; Poker Creek; Yukon Post & Scoby; Richardson; **Riverside**; **Roosevelt**; **Salcha**; **Salchakat**; Salmon; Salmon River; Sam Creek; **Saulich**; Scottie Creek; Seventeen mile; Shaw Creek Lodge; Shuman House; **Silver Fox R.H.**; Sixtymile (Glacier P.O.) Yukon; Sourdough Camp; **South Fork**; Standard; **Steele Creek**; Stephens (Stevens); Swede Boys Camp; Tanacross; Ten Mile; Tenderfoot; Tetlin; Tetlin Jct; Thirtysix Mile; Cabin Tok (Junction); Toklat; Tolovana; Tramway Bar; Tsukon Cabin; Twentyfour Mile Cabin; Twentytwo Mile Village; **Two Rivers**; United States Camp; Venetie; Venetie Landing; Wallen; **West Fork (Aband)**; White Eye; Wild Lake; Willow House; Wiseman; Woodchopper (Aband); Woodchopper Creek.

## Economic Indicators

### **FORECLOSURES**

Fairbanks Recording District\*  
2008-2014 ^

	2008	2009	2010	2011	2012	2013	2014	% Change 2013-14
January	5	12	15	11	14	19	21	11%
February	9	20	12	10	11	9	6	-33%
March	6	16	13	10	18	7	24	243%
April	7	14	14	14	9	22	13	-41%
May	10	12	13	7	18	14	13	-7%
June	10	13	10	15	10	6	19	217%
July	5	20	13	12	17	22		
August	8	10	16	12	12	25		
September	11	14	21	11	8	13		
October	14	20	13	9	9	27		
November	4	15	10	19	18	16		
December	13	15	15	14	18	13		
<b>Total</b>	<b>102</b>	<b>181</b>	<b>165</b>	<b>144</b>	<b>162</b>	<b>193</b>		

**SOURCE:** Recorder's Office, Alaska Department of Natural Resources website: <http://www.dnr.alaska.gov>, 2008-2014.

**NOTE:** Foreclosures in this table indicate the loss of property by a borrower as a result of an Affidavit of Foreclosure, Deed in Lieu of Foreclosure, Relinquishment, Trustee Deed, or Judicial Deed of Foreclosure. More than a single parcel may be affected by the foreclosure.

^ Current data supersedes previous figures reported.

\* Fairbanks Recording District includes (*bolded communities may reside in the FNSB*) **A.G.M.(Camp); Alaska Lodge; Alatna; Alder Creek; Alder Creek Camp; Alexanders Village; Allakaket; Amy Creek; Arctic City (Aband); Aurora Lodge; Barlett; P.O. (Ester); Bear Paw; Bearman Cabin; Beaver; Beaver Cr. Yukon; Bend S.C.; Berry; Berry Camp; Bettles; Bettles Field (Evansville); Biedermans Camp; Big Delta; Big Horn; Big Lake; Birch Creek; Black Jack Cabin; Bonanza; Bonanza Bar; Boundary; Burnt Paw; Cache; Canyon Creek Camp; Canyon Vil; Caribou; Caribou Bar; Caro; Cathedral Bluffs; Cathedral Rapids; Central; Chalkyitsik; Chandalar; Chapman; Chatanika; Chena; Chena Hot Springs; Chicken; Chisana; Christian; Circle; Circle Hot Springs; Cleary Summit; Coal Creek; Cold Foot; College; Crooked Creek; Dahten; Dall; Dalton; Delta Junction; Demarcation Pt; Diamond; Dome; Dome Creek; Donnelly; Doran; Dot Lake; Eagle; Eagle Creek; Eagle Village; Eielson Air Force Base; Ester (Bartlett; P.O.); Evansville (Bettles Field); Fairbanks; Fairbanks Creek Camp; Fiftysix Mile Cabin; Fish Camp; Fishook; Flume Creek; Fort Greely; Fort Hamlin; Fort Wainwright; Fort Yukon; Forty-Mile R.H. (Tetlin Junction); Fortysix Mile Cabin; Fossil Cr. S.C.; Fox; Franklin; Glacier; Glacier (Mine); Gold Bench; Goldstream; Graehl; Healy Lake; Heinie Creek; Henshaw Cabin; Horsfeld ; Jack Wade; Joe Ward Camp; John Herbert Village; Johnnie Frog Cabin; Johnson River; Joseph; Kantishna; Kochumstuk; Lake Harding Store; Lake Minchumina; Larson Cabin; Liberty; Lilywig Creek; Livengood; Log Cabin Inn; Mansfield Village; Martin; McCallum; Miller House; Millers Camp (Aband); Millers R.H.; Montana Creek Camp; Moose Creek; Mudbank Cabin; Murphy Dome; Muskeg; Myrtle Creek; Nabesna; Nabesna Village; Nation (Aband); Ninemile Cabin; Nineteen Mile; Nolan; North Pole; North Slope; Northway; Northway Junction; Old Camp; Old Rampart; Old Saulich; Olmes; Oscars Cabin; Poker Creek; Yukon Post & Scoby; Richardson; Riverside; Roosevelt; Salcha; Salchakat; Salmon; Salmon River; Sam Creek; Saulich; Scottie Creek; Seventeen mile; Shaw Creek Lodge; Shuman House; Silver Fox R.H.; Sixtymile (Glacier P.O.) Yukon; Sourdough Camp; South Fork; Standard; Steele Creek; Stephens (Stevens); Swede Boys Camp; Tanacross; Ten Mile; Tenderfoot; Tetlin; Tetlin Jet; Thirtysix Mile; Cabin Tok (Junction); Toklat; Tolovana; Tramway Bar; Tsukon Cabin; Twentyfour Mile Cabin; Twentytwo Mile Village; Two Rivers; United States Camp; Venetie; Venetie Landing; Wallen; West Fork (Aband); White Eye; Wild Lake; Willow House; Wiseman; Woodchopper (Aband); Woodchopper Creek.**

Economic Indicators

**FAIRBANKS INTERNATIONAL AIRPORT FREIGHT\***  
2008-2014

	2008	2009	2010	2011	2012	2013	2014	% Change 2013-14
<b>Incoming</b>	-----Thousands of Pounds-----							
January	710	616	477	1,007	307	449	418	-7%
February	724	647	482	459	500	425	467	10%
March	802	6,189	637	1,120	587	470	555	18%
April	879	627	739	597	557	618	604	-2%
May	914	657	1,752	652	680	622	649	4%
June	1,557	633	1,810	615	663	600	517	-14%
July	983	658	709	678	698	728		
August	1,045	673	754	716	759	814		
September	1,035	706	857	803	707	750		
October	930	947	611	637	699	635		
November	714	529	574	524	574	460		
December	552	529	501	539	599	425		
<b>Total</b>	<b>10,845</b>	<b>13,411</b>	<b>9,903</b>	<b>8,347</b>	<b>7,330</b>	<b>6,996</b>		
<b>Outgoing</b>	-----Thousands of Pounds-----							
January	2,182	1,806	2,189	2,883	2,666	1,871	2,205	18%
February	2,681	2,257	2,760	1,539	2,590	2,365	2,561	8%
March	2,677	5,667	3,191	2,776	2,721	1,394	2,578	85%
April	2,935	3,216	2,929	2,482	2,670	2,781	2,711	-3%
May	3,077	2,836	1,863	2,587	4,112	3,162	3,421	8%
June	3,126	3,188	2,511	3,340	3,574	3,740	2,973	-21%
July	3,595	3,624	3,600	3,017	3,830	3,658		
August	2,930	3,513	3,402	3,650	3,956	3,619		
September	2,768	3,202	3,652	3,233	4,143	3,003		
October	3,407	2,951	3,023	2,660	2,857	3,043		
November	2,479	2,595	2,254	2,623	2,310	1,982		
December	2,866	2,017	2,542	2,775	2,725	2,203		
<b>Total</b>	<b>34,723</b>	<b>36,872</b>	<b>33,916</b>	<b>33,565</b>	<b>38,154</b>	<b>32,821</b>		

**SOURCE:** Alaska Department of Transportation and Public Facilities, Fairbanks International Airport, "Fairbanks International Airport Statistical Report", 2008-2014.

**NOTE:** UPS made a sizeable stop in March 2009. Everts Air Fuel notable stop in May-June 2010. Sizeable stop by a domestic carrier in January 2011. Kalitta Air stopped at FAI March 2011. Frontier Flying Service, Lynden Air Cargo, and Tatonduk Outfitters boosted numbers in May 2012.

\* Numbers are preliminary and may be subject to revision.



Economic Indicators

**FAIRBANKS INTERNATIONAL AIRPORT TRANSIT FREIGHT\*^**  
2008-2014

	2008	2009	2010	2011	2012	2013	2014	% Change 2013-14
-----Thousands of Pounds-----								
January	299	463	572	886	276	631	313	-50%
February	341	298	1,543	235	282	270	219	-19%
March	335	14,296	1,118	258	361	670	664	-1%
April	338	302	296	297	750	276	86	-69%
May	261	245	342	344	326	291	107	-63%
June	307	361	1,574	342	370	109	97	-11%
July	4,334	359	327	341	397	250		
August	5,168	350	593	321	350	215		
September	329	292	8,508	305	926	40		
October	1,294	268	451	309	348	151		
November	317	748	993	293	211	469		
December	553	940	364	350	301	323		
<b>Total</b>	<b>13,876</b>	<b>18,922</b>	<b>16,681</b>	<b>4,281</b>	<b>4,898</b>	<b>3,695</b>		

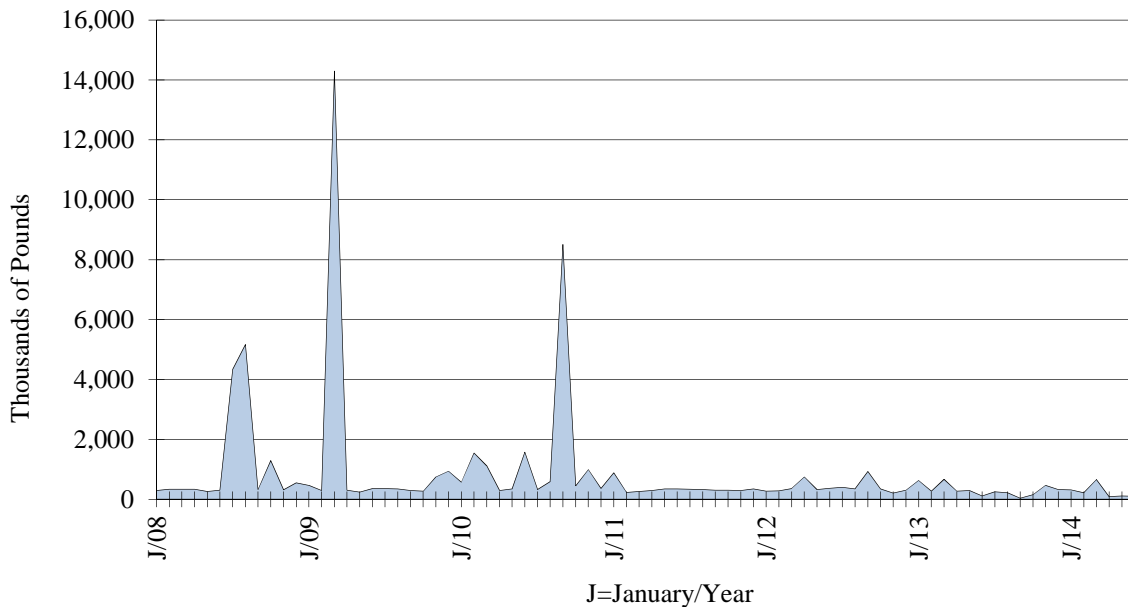
**SOURCE:** Alaska Department of Transportation and Public Facilities, Fairbanks International Airport, "Fairbanks International Airport Statistical Report", 2008-2014.

**NOTE:** On average FAI should see between 70-100 operations from *Volga-Dnepr Airlines* per year. Ukraine-based *Antonov Design Bureau*, made transit landings Feb-Mar 2010.

^ International Airlines: Evergreen and Volga-Dnepr made non-routine stops at FAI in July-August 2008. UPS made a sizeable stop in March 2009. Asiana, Cathay Pacific, China Air, Nippon Cargo, Atlas Air, China Cargo, and Evergreen International plus domestic carriers Fed Ex and UPS had transit landings in September and November 2010. Cathay Pacific and Nippon Cargo boosted numbers reported in Apr 2012, Jan and Mar 2013. Cathay Pacific, Nippon Cargo and China Air increase values in Sept 2012.

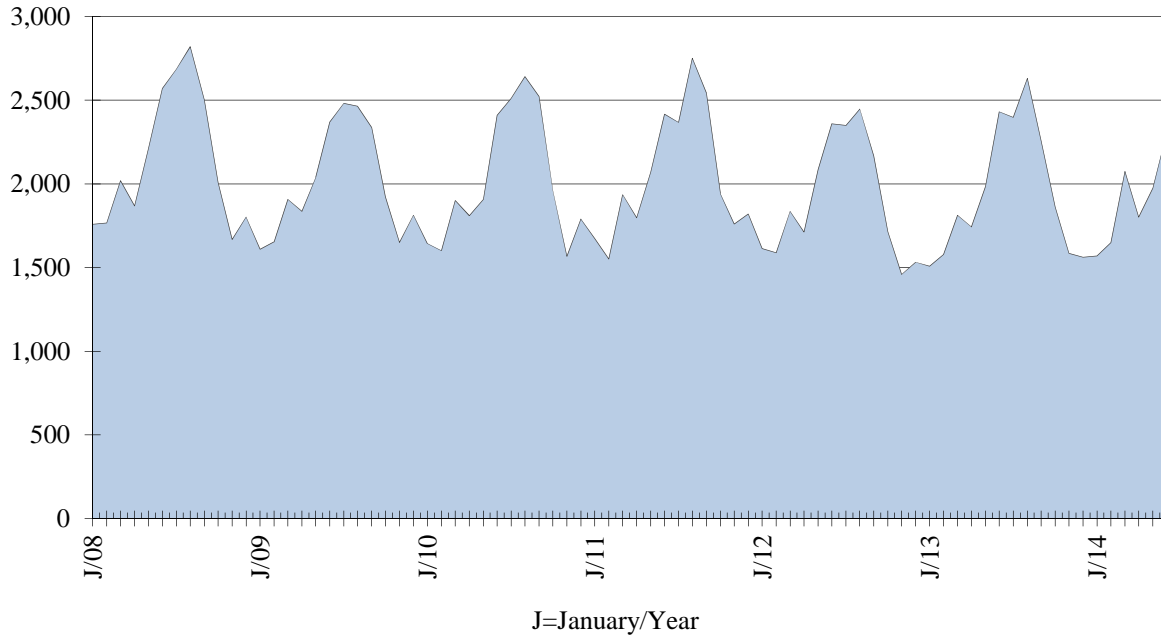
\* Numbers are preliminary and may be subject to revision.

**FAIRBANKS INTERNATIONAL AIRPORT TRANSIT FREIGHT**  
2008-2014



Economic Indicators

**FAIRBANKS INTERNATIONAL AIRPORT REVENUE LANDINGS**  
2008-2014



**FAIRBANKS INTERNATIONAL AIRPORT REVENUE LANDINGS\***  
2008-2014

	2008	2009	2010	2011	2012	2013	2014	% Change 2013-14
January	1,758	1,610	1,643	1,673	1,614	1,508	1,569	4%
February	1,766	1,653	1,601	1,551	1,588	1,578	1,649	4%
March	2,019	1,907	1,900	1,935	1,836	1,813	2,074	14%
April	1,868	1,836	1,810	1,797	1,712	1,742	1,801	3%
May	2,208	2,039	1,906	2,070	2,085	1,983	1,973	-1%
June	2,571	2,370	2,410	2,416	2,360	2,431	2,305	-5%
July	2,686	2,481	2,510	2,368	2,349	2,398		
August	2,820	2,464	2,641	2,751	2,447	2,631		
September	2,503	2,338	2,523	2,544	2,167	2,258		
October	2,009	1,922	1,957	1,942	1,715	1,862		
November	1,668	1,650	1,567	1,760	1,459	1,585		
December	1,802	1,813	1,791	1,820	1,532	1,561		
<b>Total</b>	<b>25,678</b>	<b>24,083</b>	<b>24,259</b>	<b>24,627</b>	<b>22,864</b>	<b>23,350</b>		

**SOURCE:** Alaska Department of Transportation and Public Facilities, Fairbanks International Airport, "Fairbanks International Airport Statistical Report", 2008-2014.

\* Numbers are preliminary and may be subject to revision.

Economic Indicators

**FAIRBANKS INTERNATIONAL AIRPORT PASSENGERS\***

2008-2014

	2008	2009	2010	2011	2012	2013	2014	% Change 2013-14
<b>Incoming</b>								
January	33,333	32,118	32,275	33,897	33,555	34,474	34,000	-1%
February	31,801	29,051	29,677	30,763	31,566	31,104	32,849	6%
March	35,869	33,266	34,689	39,085	37,380	38,735	43,295	12%
April	30,386	28,065	29,191	30,449	30,156	29,853	31,459	5%
May	45,270	40,536	40,531	41,461	42,888	41,734	42,797	3%
June	60,012	51,532	51,352	51,949	56,506	53,673	56,100	5%
July	60,249	54,055	56,896	55,490	57,927	59,516		
August	64,713	54,191	57,370	57,039	58,021	57,174		
September	39,664	37,907	37,040	38,298	39,404	38,093		
October	31,565	47,049	35,120	32,048	31,710	33,781		
November	28,568	31,077	29,939	30,024	30,085	29,534		
December	31,534	31,855	32,823	31,408	31,250	33,512		
<b>Total</b>	<b>492,964</b>	<b>470,702</b>	<b>466,903</b>	<b>471,911</b>	<b>480,448</b>	<b>481,183</b>		
<b>Outgoing</b>								
January	29,821	29,763	28,908	30,157	29,447	30,946	30,299	-2%
February	31,495	28,742	28,955	29,911	31,231	30,457	32,386	6%
March	35,259	32,379	34,426	38,609	37,143	38,519	44,297	15%
April	29,871	27,517	29,076	29,943	29,746	29,952	31,562	5%
May	40,420	35,530	36,495	37,776	40,461	38,411	38,924	1%
June	54,765	48,923	47,899	48,027	50,765	49,715	54,636	10%
July	58,257	52,252	54,198	52,019	55,564	56,807		
August	58,267	50,500	53,742	53,832	56,668	56,543		
September	44,796	43,105	44,985	45,230	45,283	45,978		
October	34,349	35,654	36,204	33,996	33,915	35,712		
November	28,909	31,291	30,499	30,905	30,909	30,748		
December	34,171	36,778	36,844	35,921	36,169	37,428		
<b>Total</b>	<b>480,380</b>	<b>452,434</b>	<b>462,231</b>	<b>466,326</b>	<b>477,301</b>	<b>481,216</b>		

**SOURCE:** Alaska Department of Transportation & Public Facilities, Fairbanks International Airport, "Fairbanks International Airport Statistical Report", 2008-2014.

**NOTE:** Numbers do not include passengers in transit. Arctic Winter Games took place in Fairbanks March 2014.

\* Numbers are preliminary and may be subject to revision.

## Economic Indicators

### **ALASKA HIGHWAY STATEWIDE ENTERING PASSENGERS\***

Via the Yukon Territory  
2008-2014

	2008	2009	2010	2011	2012	2013	2014	% Change 2013-14
January	2,108	2,388	2,216	2,213	1,868	1,888	2,171	15%
February	2,365	2,419	2,139	2,350	2,037	1,970	1,905	-3%
March	3,681	3,958	3,434	3,992	3,688	3,358	3,172	-6%
April	5,168	4,899	5,662	5,068	4,611	4,592	4,697	2%
May	11,033	12,447	11,989	11,732	10,430	10,290	10,051	-2%
June	17,887	22,929	23,610	22,411	21,800	22,299	19,213	-14%
July	16,946	24,187	21,002	22,964	24,446	23,400		
August	13,246	18,311	16,553	20,063	18,903	18,272		
September	5,987	7,954	5,829	7,901	7,409	7,661		
October	3,832	3,803	3,949	3,512	3,489	3,296		
November	2,096	2,783	2,547	2,424	2,426	2,467		
December	2,145	2,237	2,334	2,016	1,854	2,132		
<b>Total</b>	<b>86,494</b>	<b>108,315</b>	<b>101,264</b>	<b>106,646</b>	<b>102,961</b>	<b>101,625</b>		

**SOURCE:** U.S. Department of Justice, Immigration and Naturalization Service, District 32, (Tok) personal communications, 2008-2014.

**NOTE:** This entry point includes statewide travel for automobiles on the Alaska Highway and, during the summer, the Taylor Highway (Poker Creek).

\* Current year figures subject to revisions.

### **ALASKA HIGHWAY STATEWIDE EXITING PASSENGERS\***

Via the Yukon Territory  
2008-2014

	2008	2009	2010	2011	2012	2013	2014	% Change 2013-14
January	1,783	1,491	1,688	1,483	1,485	1,640	1,597	-3%
February	1,812	2,018	1,643	1,657	1,553	1,376	1,457	6%
March	2,455	2,380	2,542	2,297	2,617	2,142	2,275	6%
April	2,608	2,884	3,155	2,615	2,719	2,962	2,425	-18%
May	6,990	7,057	7,358	6,771	6,171	6,092	5,332	-12%
June	15,502	13,932	14,771	15,473	14,116	15,021	12,977	-14%
July	22,729	20,196	24,479	22,377	20,212	19,144		
August	21,827	20,089	11,766	20,734	20,268	20,783		
September	10,585	10,522	11,196	10,341	9,859	10,157		
October	3,657	4,145	4,673	4,470	3,485	4,135		
November	2,054	2,781	2,070	2,213	2,074	3,035		
December	1,573	1,998	1,613	1,867	1,942	1,582		
<b>Total</b>	<b>93,575</b>	<b>89,493</b>	<b>86,954</b>	<b>92,298</b>	<b>86,501</b>	<b>88,069</b>		

**SOURCE:** Canadian Customs Border Services, Area Ports, Yukon Government, 2008-2014.

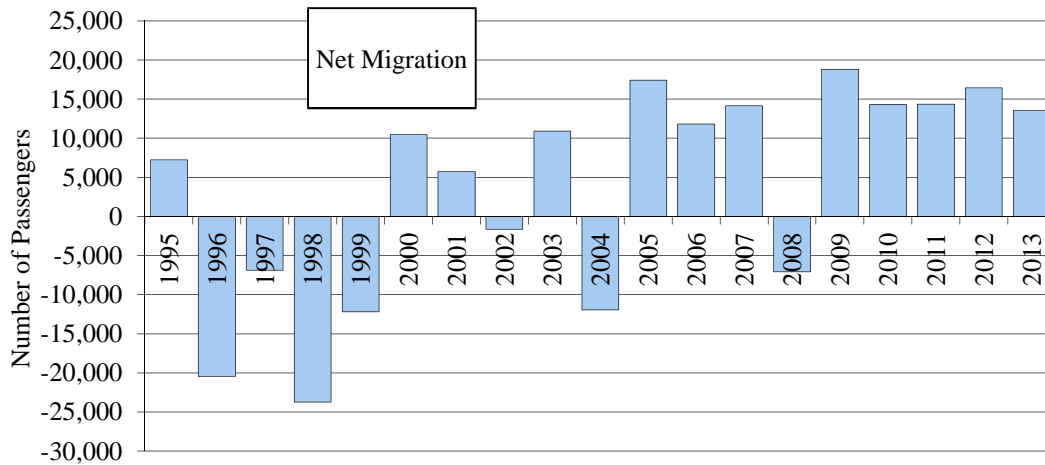
**NOTE:** This exit point includes statewide travel for automobiles on the Alaska Highway (Beaver Creek) and, during the summer through September 15th, the Taylor Highway (Little Gold).

\* Current year figures subject to revisions.

## Economic Indicators

### **ALASKA HIGHWAY STATEWIDE NET ANNUAL MIGRATION TRENDS**

Via the Yukon Territory  
1995-2013



**SOURCE:** U.S. Department of Justice, Immigration and Naturalization Service, District 32, and Customs Border Services, Area Ports, Yukon Government, Canada, personal communications 1995-2013.

### **ALASKA HIGHWAY STATEWIDE NET MONTHLY MIGRATION\***

Via the Yukon Territory  
2008-2014

	2008	2009	2010	2011	2012	2013	2014
January	325	897	528	730	383	248	574
February	553	401	496	693	484	594	448
March	1,226	1,578	892	1,695	1,071	1,216	897
April	2,560	2,015	2,507	2,453	1,892	1,630	2,272
May	4,043	5,390	4,631	4,961	4,259	4,198	4,719
June	2,385	8,997	8,839	6,938	7,684	7,278	6,236
July	-5,783	3,991	-3,477	587	4,234	4,256	
August	-8,581	-1,778	4,787	-671	-1,365	-2,511	
September	-4,598	-2,568	-5,367	-2,440	-2,450	-2,496	
October	175	-342	-724	-958	4	-839	
November	42	2	477	211	352	-568	
December	572	239	721	149	-88	550	
<b>Net</b>	<b>-7,081</b>	<b>18,822</b>	<b>14,310</b>	<b>14,348</b>	<b>16,460</b>	<b>13,556</b>	

**SOURCE:** U.S. Department of Justice, Immigration and Naturalization Service, District 32, and Customs Border Services, Area Ports, Yukon Government, Canada, personal communications 2008-2014.

**NOTE:** Numbers denote the difference between the number of passengers entering and exiting statewide Alaska on the Alaska Highway and the Taylor Highway (summer only through September 15th).

\* Current year figures subject to revisions.

## Economic Indicators

### **HOTEL/MOTEL ROOM RECEIPTS\***

Fairbanks North Star Borough  
2010-2014

Quarter	2010	2011	2012	2013	2014	% Change 2013-14
1st	\$5,549,520	\$6,317,082	\$6,603,066	\$7,170,000	\$8,202,072	14.4%
2nd	\$14,817,922	\$13,757,533	\$14,464,988	\$14,031,111	\$14,523,111	3.5%
3rd	\$27,183,699	\$26,099,065	\$28,737,266	\$25,686,646		
4th	\$6,887,983	\$7,429,594	\$8,886,940	\$10,909,172		
<b>Total</b>	<b>\$54,439,124</b>	<b>\$53,603,274</b>	<b>\$58,692,260</b>	<b>\$57,796,929</b>		

**SOURCE:** City of Fairbanks, Finance Dept.; City of North Pole, Finance Dept.; FNSB, Financial Services, personal communications, 2010-2014.

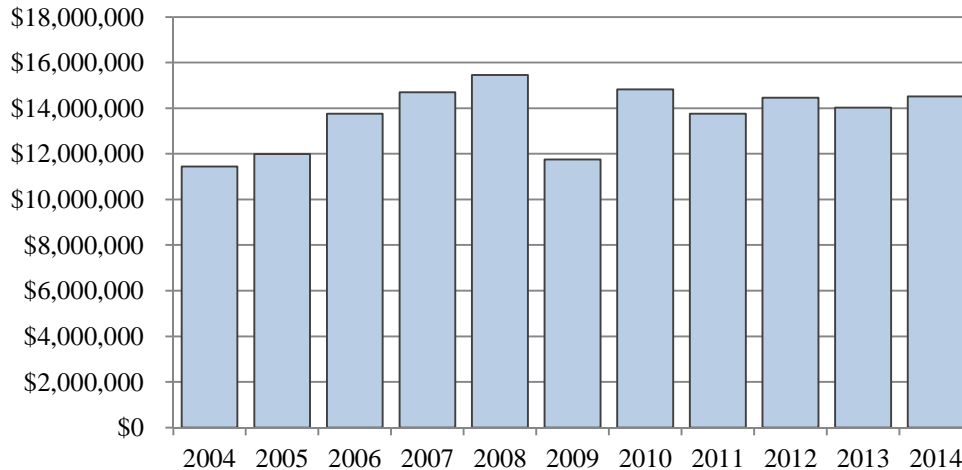
**NOTE:** Room receipt figures are based on hotel/motel bed tax which is 8%. Receipts are calculated on taxes paid. There is a time lag between collection and reporting of these taxes. Arctic Winter Games took place March 2014.

\* Due to accrual adjustments the current data will supersede previous figures reported.

### **SECOND QUARTER HOTEL/MOTEL ROOM RECEIPTS**

Fairbanks North Star Borough  
2004-2014

#### **2nd Quarter Comparisons**



## Economic Indicators

### ANNUAL HOTEL/MOTEL ROOM RECEIPTS\*

Fairbanks North Star Borough  
1993-2013

Year	1st Qtr.	2nd Qtr.	3rd Qtr.	4th Qtr.	Annual Total	% Chg fr Prev Yr
1993	\$1,912,664	\$6,509,495	\$13,079,188	\$2,910,413	\$24,411,760	15.6%
1994	\$2,139,404	\$7,282,236	\$14,218,355	\$3,889,047	\$27,529,042	12.8%
1995	\$2,342,331	\$8,112,819	\$14,946,769	\$3,811,319	\$29,213,238	6.1%
1996	\$2,344,161	\$8,651,705	\$15,188,972	\$3,189,160	\$29,373,998	0.6%
1997	\$2,414,719	\$7,794,574	\$18,608,324	\$3,526,383	\$32,344,000	10.1%
1998	\$2,551,863	\$10,173,376	\$17,682,597	\$4,296,950	\$34,704,786	7.3%
1999	\$3,055,908	\$10,093,298	\$18,457,738	\$4,567,227	\$36,174,171	4.2%
2000	\$3,274,010	\$9,923,679	\$17,456,009	\$4,959,298	\$35,612,996	-1.6%
2001	\$3,745,458	\$10,072,118	\$17,394,993	\$7,476,847	\$38,689,416	8.6%
2002	\$3,421,975	\$9,279,386	\$15,610,143	\$7,457,382	\$35,768,886	-7.5%
2003	\$4,269,920	\$8,951,462	\$18,034,906	\$6,161,282	\$37,417,570	4.6%
2004	\$4,282,186	\$11,444,548	\$24,397,446	\$6,245,425	\$46,369,605	23.9%
2005	\$4,341,420	\$11,991,395	\$26,148,408	\$6,416,203	\$48,897,426	5.5%
2006	\$4,396,630	\$13,755,407	\$27,784,543	\$6,628,268	\$52,564,848	7.5%
2007	\$5,253,550	\$14,703,344	\$29,164,266	\$7,198,573	\$56,319,733	7.1%
2008	\$4,928,353	\$15,450,099	\$29,652,248	\$7,251,731	\$57,282,431	1.7%
2009	\$5,554,495	\$11,750,227	\$25,311,523	\$7,176,965	\$49,793,210	-13.1%
2010	\$5,549,520	\$14,817,922	\$27,183,699	\$6,887,983	\$54,439,124	9.3%
2011	\$6,317,082	\$13,757,533	\$26,099,065	\$7,429,594	\$53,603,274	-1.5%
2012	\$6,603,066	\$14,464,988	\$28,737,266	\$8,886,940	\$58,692,260	9.5%
2013	\$7,170,000	\$14,031,111	\$25,686,646	\$10,909,172	\$57,796,929	-1.5%

**SOURCE:** Fairbanks North Star Borough, City of Fairbanks, and City of North Pole, Finance Departments, personal communications 1993-2013.

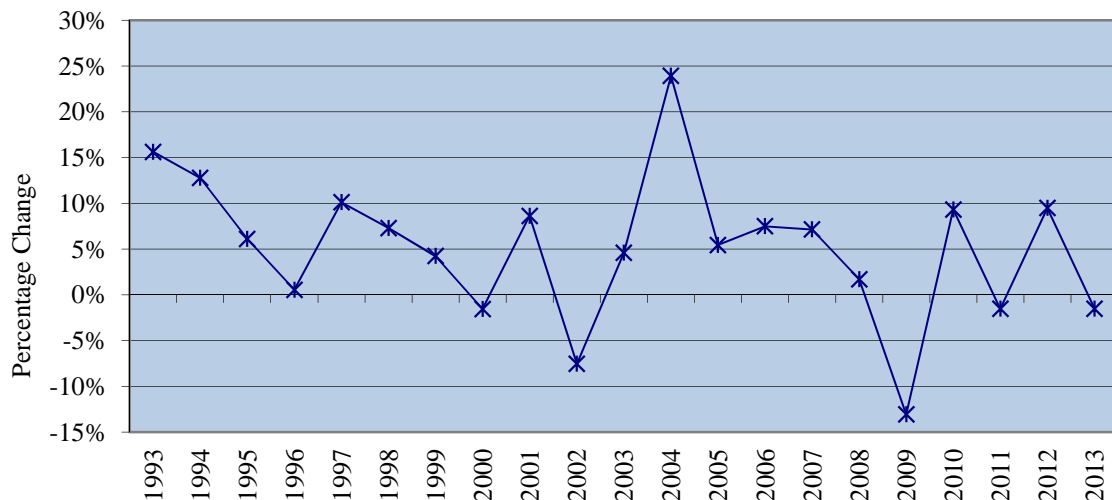
**NOTE:** Room receipt figures are based on hotel/motel bed tax which is 8%. Receipts are calculated on taxes paid. There is a time lag between collection and reporting of these taxes.

City of North Pole was added beginning second quarter 2009.

\* Due to accrual adjustments the current figure supersedes previous figures.

### ANNUAL HOTEL/MOTEL ROOM RECEIPTS

Fairbanks North Star Borough  
1993-2013



Economic Indicators

**UNIVERSITY OF ALASKA MUSEUM VISITORS**

Fairbanks, Alaska  
2009-2014

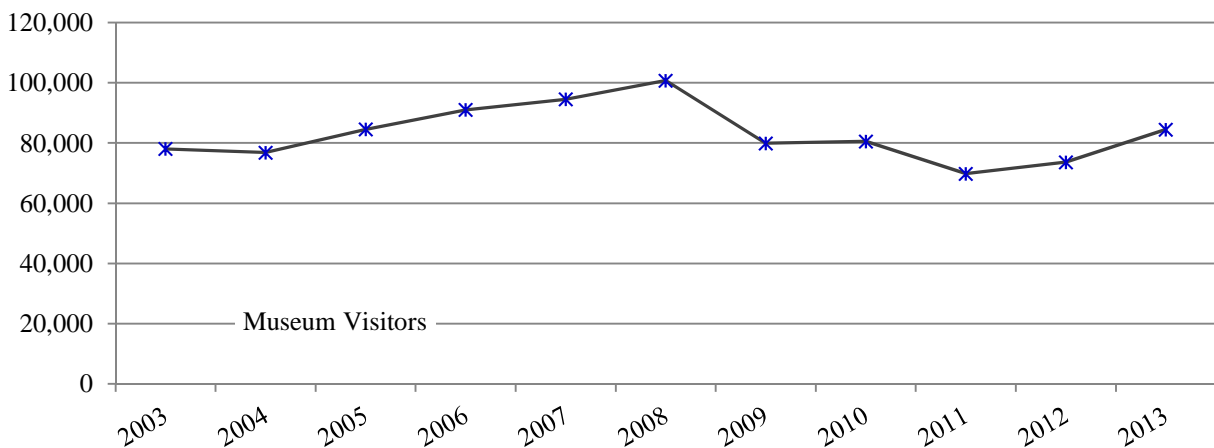
	2009	2010	2011	2012	2013	2014	% Change 2013-14
January	2,236	1,647	1,705	2,235	3,170	4,697	48%
February	4,502	4,465	3,199	3,969	3,705	6,201	67%
March	3,394	3,725	4,230	5,934	6,871	9,634	40%
April	2,328	2,272	2,525	2,911	2,664	4,657	75%
May	5,767	5,367	4,303	5,100	4,859	4,721	-3%
June	15,275	14,051	12,517	11,236	10,956	12,070	10%
July	16,548	16,587	14,169	13,668	14,746		
August	14,709	14,193	12,851	12,536	12,993		
September	7,567	7,698	6,743	7,137	8,163		
October	3,249	4,207	2,841	3,534	6,116		
November	1,886	2,567	2,124	1,718	4,206		
December	2,437	3,785	2,588	3,662	6,013		
<b>Total</b>	<b>79,898</b>	<b>80,564</b>	<b>69,795</b>	<b>73,640</b>	<b>84,462</b>		

**SOURCE:** University of Alaska Museum, University of Alaska, Fairbanks, personal communications 2009-2014.

**NOTE:** Numbers are preliminary and may be subject to revision. The Fairbanks Children's Museum opened October 2013 in the museums auditorium and will remain there until the end of April 2014. Arctic Winter Games took place March 2014. Beginning January 2014 and continuing throughout 2014, a Wells Fargo sponsorship will pay entrance fees for active-duty military families.

**UNIVERSITY OF ALASKA MUSEUM VISITORS**

Fairbanks, Alaska  
2003-2013

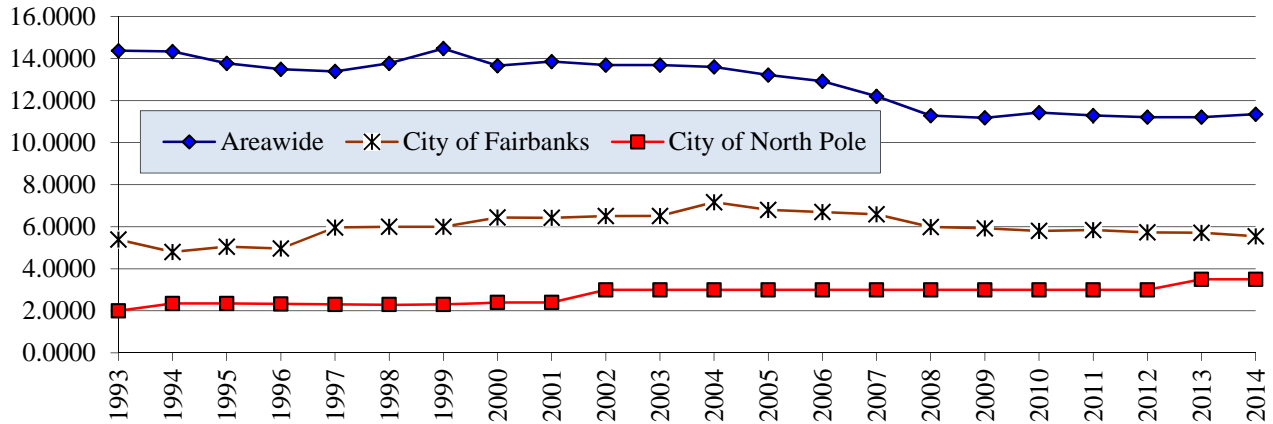




## Economic Indicators

### PROPERTY TAX MILL RATES

Fairbanks North Star Borough, Fairbanks, and North Pole  
Fiscal Years 1993-2014



### PROPERTY TAX MILL RATES

Fairbanks North Star Borough, Fairbanks, and North Pole  
Fiscal Years 1993-2014

Fiscal Year Ending June 30th	----Fairbanks North Star Borough----				-----Fairbanks-----		-----North Pole *-----	
	Non- Areawide	Areawide	Solid Waste District	Total Outside Cities	City of Fairbanks	City of Fairbanks + Areawide	City of North Pole	City of NP + Areawide + Solid Waste
1993	0.4380	14.3770	1.0880	15.9030	5.3930	<b>19.7700</b>	2.0000	<b>17.4650</b>
1994	0.6200	14.3400	1.1450	16.1050	4.8030	<b>19.1430</b>	2.3500	<b>17.8350</b>
1995	0.5940	13.7770	1.1580	15.5290	5.0550	<b>18.8320</b>	2.3500	<b>17.2850</b>
1996	0.5430	13.4950	1.1360	15.1740	4.9640	<b>18.4590</b>	2.3300	<b>16.9610</b>
1997	0.5520	13.3900	1.1590	15.1010	5.9660	<b>19.3560</b>	2.3000	<b>16.8490</b>
1998	0.5110	13.7750	1.1660	15.4520	5.9990	<b>19.7740</b>	2.3000	<b>17.2410</b>
1999	0.5160	14.4800	1.1880	16.1840	6.0000	<b>20.4800</b>	2.3000	<b>17.9680</b>
2000	0.5220	13.6620	1.1590	15.3430	6.4420	<b>20.1040</b>	2.4000	<b>17.2210</b>
2001	0.5210	13.8600	1.1620	15.5430	6.4260	<b>20.2860</b>	2.4000	<b>17.4220</b>
2002	0.5250	13.6930	1.1870	15.4050	6.5110	<b>20.2040</b>	3.0000	<b>17.8800</b>
2003	0.5230	13.6930	1.1870	15.4030	6.5160	<b>20.2090</b>	3.0000	<b>17.8800</b>
2004	0.4350	13.6060	1.1830	15.2240	7.1710	<b>20.7770</b>	3.0000	<b>17.7890</b>
2005	0.4250	13.2190	1.1670	14.8110	6.8040	<b>20.0230</b>	3.0000	<b>17.3860</b>
2006	0.4180	12.9230	1.1500	14.4910	6.7000	<b>19.6230</b>	3.0000	<b>17.0730</b>
2007	0.4090	12.2090	1.1260	13.7440	6.5940	<b>18.8030</b>	3.0000	<b>16.3350</b>
2008	0.4000	11.2870	1.1030	12.7900	5.9910	<b>17.2780</b>	3.0000	<b>15.3900</b>
2009	0.3930	11.1860	1.1210	12.7000	5.9270	<b>17.1130</b>	3.0000	<b>15.3070</b>
2010	0.4000	11.4320	1.1410	12.9730	5.8030	<b>17.2350</b>	3.0000	<b>15.5730</b>
2011	0.5110	11.2940	1.1940	12.9990	5.8430	<b>17.1370</b>	3.0000	<b>15.4880</b>
2012	0.5250	11.2160	1.2290	12.9700	5.7340	<b>16.9500</b>	3.0000	<b>15.4450</b>
2013	0.5230	11.2160	1.2320	12.9710	5.7160	<b>16.9320</b>	3.5000	<b>15.9480</b>
2014	0.4930	11.3560	1.3000	13.1490	5.5490	<b>16.9050</b>	3.5000	<b>16.1560</b>
<b>% Change 2013-14</b>	<b>-5.74%</b>	<b>1.25%</b>	<b>5.52%</b>	<b>1.37%</b>	<b>-2.92%</b>	<b>-0.16%</b>	<b>0.00%</b>	<b>1.30%</b>

**SOURCE:** Fairbanks North Star Borough, Assessing Office, Fairbanks, Alaska, personal communications, 1993-2014.

**NOTE:** Mill rates represent dollars paid per \$1,000 of assessed value on taxable property. The Borough runs on a Fiscal Year from July 1st through June 30th. The Cities of Fairbanks and North Pole run on a calendar year from January 1st through December 31st.

\* City of North Pole began a solid waste tax in 1991.

## Economic Indicators

### ASSESSED VALUE OF PROPERTY\*

City of Fairbanks, City of North Pole, and the Fairbanks North Star Borough  
1994-2014

Year	City of Fairbanks	FNSB Only (in City)	City of North Pole	Balance of Borough		Pipeline Related	FNSB**
				FNSB^	Major Mining		
----- (Millions of Dollars) -----							
1994	\$990.3	-	\$155.8	\$1,471.0	-	\$359.1	\$2,976.2
1995	\$1,025.1	-	\$158.5	\$1,589.5	-	\$317.7	\$3,090.8
1996	\$1,055.0	-	\$159.3	\$1,761.9	-	\$306.6	\$3,282.8
1997	\$1,084.4	-	\$171.4	\$1,721.3	\$261.3	\$300.0	\$3,538.4
1998	\$1,136.2	-	\$189.9	\$1,853.5	\$254.3	\$286.6	\$3,720.5
1999	\$1,180.0	-	\$246.8	\$2,036.2	\$251.8	\$303.6	\$4,018.4
2000	\$1,253.3	-	\$248.1	\$2,181.1	\$243.7	\$258.2	\$4,184.4
2001	\$1,283.3	-	\$249.0	\$2,288.4	\$242.5	\$277.6	\$4,340.8
2002	\$1,361.9	-	\$255.4	\$2,456.7	\$231.1	\$263.4	\$4,568.5
2003	\$1,449.8	-	\$265.7	\$2,637.4	\$231.1	\$270.8	\$4,854.8
2004	\$1,583.9	-	\$273.7	\$2,879.6	\$231.1	\$271.2	\$5,239.5
2005	\$1,746.4	-	\$259.0	\$3,227.8	\$231.3	\$275.3	\$5,739.7
2006	\$1,938.8	-	\$276.4	\$3,599.9	\$224.6	\$377.8	\$6,417.5
2007	\$2,101.4	-	\$299.9	\$4,051.6	\$221.0	\$369.5	\$7,043.4
2008	\$2,243.3	-	\$314.0	\$4,310.4	\$220.0	\$508.8	\$7,596.5
2009	\$2,340.5	-	\$325.5	\$4,402.1	\$220.0	\$694.1	\$7,982.2
2010	\$2,457.3	-	\$318.9	\$4,441.5	\$359.4	\$739.6	\$8,316.7
2011	\$2,596.8	-	\$333.5	\$4,580.0	\$391.0	\$652.1	\$8,553.4
2012	\$2,629.5	\$1.6	\$332.6	\$4,710.1	\$403.4	\$669.2	\$8,746.4
2013	\$2,646.7	\$1.6	\$306.9	\$4,742.0	\$403.4	\$947.5	\$9,048.1
2014	\$2,700.3	\$1.6	\$301.1	\$4,964.4	\$525.0	\$869.7	\$9,362.1
<b>% Change 2013-14</b>	<b>2.0%</b>	<b>0.0%</b>	<b>-1.9%</b>	<b>4.7%</b>	<b>30.1%</b>	<b>-8.2%</b>	<b>3.5%</b>

**SOURCE:** Fairbanks North Star Borough, Assessing Dept., personal communications, 1994-2014.

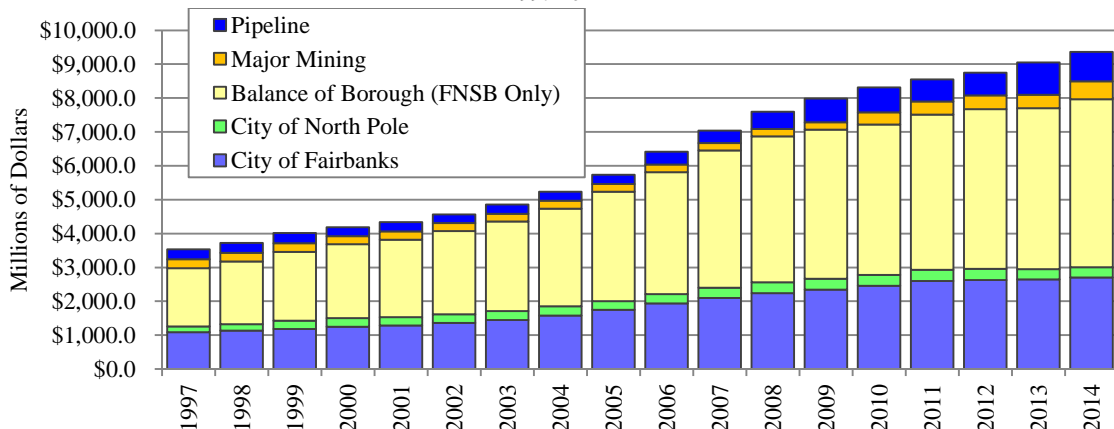
\* Includes assessed values for City of Fairbanks, City of North Pole, FNSB, FNSB (in City), and Pipeline related as reported in the certified FNSB official assessment roll type I, and Major Mining operations as calculated for this report.

^ Preliminary value based on the FNSB official assessment roll for 2014 (less major mining) *shown as rounded*.

**NOTE:** Introduced major mining category beginning with 1997 numbers. Revised FNSB only 2011-2012.

### ASSESSED VALUE OF PROPERTY

City of Fairbanks, City of North Pole, and the Fairbanks North Star Borough  
1997-2014



Economic Indicators

**ASSESSED VALUE OF PIPELINE RELATED PROPERTY**

Fairbanks North Star Borough  
1993-2014

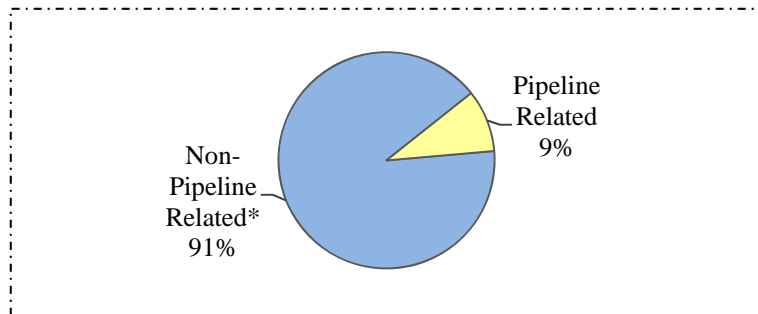
Year	Non-Pipeline Related*	Pipeline Related	% Chg Pipeline	FNSB Total^	% Chg FNSB
	----- (Millions of Dollars) -----		-	(Millions of Dollars)	-
1993	\$2,497.0	\$408.7	-4.2%	\$2,905.7	1.9%
1994	\$2,617.1	\$359.1	-12.1%	\$2,976.2	2.4%
1995	\$2,773.1	\$317.7	-11.5%	\$3,090.8	3.9%
1996	\$2,976.2	\$306.6	-3.5%	\$3,282.8	6.2%
1997	\$3,238.3	\$300.0	-2.2%	\$3,538.3	7.8%
1998	\$3,433.8	\$286.6	-4.5%	\$3,720.4	5.1%
1999	\$3,714.8	\$303.6	5.9%	\$4,018.4	8.0%
2000	\$3,926.3	\$258.2	-15.0%	\$4,184.5	4.1%
2001	\$4,063.2	\$277.6	7.5%	\$4,340.8	3.7%
2002	\$4,305.1	\$263.4	-5.1%	\$4,568.5	5.2%
2003	\$4,583.9	\$270.8	2.8%	\$4,854.7	6.3%
2004	\$4,968.2	\$271.2	0.1%	\$5,239.4	7.9%
2005	\$5,464.3	\$275.3	1.5%	\$5,739.6	9.5%
2006	\$6,039.7	\$377.8	37.2%	\$6,417.5	11.8%
2007	\$6,674.0	\$369.5	-2.2%	\$7,043.5	9.8%
2008	\$7,087.6	\$508.8	37.7%	\$7,596.4	7.8%
2009	\$7,288.1	\$694.1	36.4%	\$7,982.2	5.1%
2010	\$7,577.2	\$739.6	6.6%	\$8,316.8	4.2%
2011	\$7,901.3	\$652.1	-11.8%	\$8,553.4	2.8%
2012	\$8,077.2	\$669.2	2.6%	\$8,746.4	2.3%
2013	\$8,100.6	\$947.5	41.6%	\$9,048.1	3.4%
2014	\$8,490.8	\$869.7	-8.2%	\$9,360.5	3.5%
<b>% Chg 2013-14</b>	<b>4.8%</b>	<b>-8.2%</b>	<b>-</b>	<b>3.5%</b>	<b>-</b>

SOURCE: Fairbanks North Star Borough, Assessing Dept., personal communications 1993-2014.

^ Preliminary value based on the FNSB official assessment tax roll Type I for 2014 shown as rounded.

**ASSESSED VALUE OF PIPELINE RELATED PROPERTY**

Fairbanks North Star Borough  
2014



## Economic Indicators

### **ALCOHOLIC BEVERAGE TAX REVENUE**

City of Fairbanks, City of North Pole, Fairbanks North Star Borough  
2009-2014

	Qtr.	City of Fairbanks	City of North Pole	FNSB	Combine Values Total
2009	1st	\$345,895	\$3,168	\$323,403	\$672,465
	2nd	\$401,497	\$35,596	\$298,770	\$735,862
	3rd	\$458,219	\$52,981	\$389,676	\$900,875
	4th	\$459,167	\$57,959	\$334,020	\$851,146
2010	1st	\$242,798	\$26,195	\$307,943	\$576,936
	2nd	\$418,561	\$48,548	\$203,843	\$670,951
	3rd	\$508,506	\$56,360	\$201,308	\$766,174
	4th	\$749,922	\$75,485	\$240,692	\$1,066,099
2011	1st	\$458,347	\$19,083	\$210,403	\$687,833
	2nd	\$533,710	\$50,210	\$239,561	\$823,481
	3rd	\$562,560	\$44,169	\$305,945	\$912,674
	4th	\$562,848	\$79,704	\$251,701	\$894,253
2012	1st	\$442,691	\$25,324	\$219,470	\$687,485
	2nd	\$541,692	\$48,898	\$262,432	\$853,022
	3rd	\$565,447	\$60,969	\$328,351	\$954,767
	4th	\$576,864	\$72,324	\$266,220	\$915,409
2013	1st	\$476,934	\$27,949	\$228,965	\$733,847
	2nd	\$529,514	\$52,641	\$264,725	\$846,880
	3rd	\$555,052	\$58,883	\$328,550	\$942,485
	4th	\$590,282	\$76,606	\$266,466	\$933,353
2014	1st	\$493,646	\$28,317	\$212,296	\$734,259
	2nd	\$555,857	\$51,110	\$246,474	\$853,441

**SOURCE:** Fairbanks North Star Borough, Collections Dept., City of Fairbanks Finance Dept., City of North Pole Finance Dept., personal communications, 2009-2014.

**NOTE:** City of Fairbanks began collecting Alcoholic Beverage tax at (5%) according to Reenacting Ordinance 4470, September 9, 1985; an ordinance to amend FGC Chapter 5, Taxation, by repealing Article II, Sales Tax, and reenacting the same to levy a sales tax on Alcoholic Beverages; and setting an effective stay date of September 28, 1985.

City of North Pole began collecting Alcoholic Beverage tax at (5%) according to Ordinance 09-01, February 2, 2009, effective 5 p.m., February 28, 2009.

FNSB Code of Ordinance\*, Title 3 Finance and Revenue, Chapter 3.59, Alcoholic Beverage Tax (5%), adopted March 25, 2004; effective: Sec.2 at 5:00 p.m. on June 30, 2004; Sec. 3-4 at 5:00 p.m. on first borough business day following adoption.

\* Current numbers supercedes previous figures reported.

### **ANNUAL ALCOHOLIC BEVERAGE TAX REVENUE**

City of Fairbanks, City of North Pole, Fairbanks North Star Borough  
2009-2013

	City of Fairbanks	City of North Pole	FNSB
2009	\$1,664,777	\$149,704	\$1,345,869
2010	\$1,919,787	\$206,588	\$953,785
2011	\$2,117,464	\$193,166	\$1,007,610
2012	\$2,126,694	\$207,515	\$1,076,474
2013	\$2,151,781	\$216,078	\$1,088,705
<b>% Change 2012-13</b>	<b>1.2%</b>	<b>4.1%</b>	<b>1.1%</b>

## Economic Indicators

### **TOBACCO EXCISE TAX REVENUE\***

City of Fairbanks, City of North Pole, Fairbanks North Star Borough  
2009-2014

	Qtr.	City of Fairbanks	City of North Pole	FNSB	Combine Values Total
2009	1st	\$134,967	-	\$237,817	\$372,784
	2nd	\$196,172	-	\$284,817	\$480,990
	3rd	\$222,512	-	\$334,642	\$557,154
	4th	\$194,840	-	\$354,137	\$548,978
2010	1st	\$195,880	-	\$313,742	\$509,622
	2nd	\$242,931	-	\$368,152	\$611,084
	3rd <sup>^</sup>	\$329,449	-	\$702,661	\$1,032,110
	4th	\$224,137	-	\$378,080	\$602,218
2011	1st	\$196,488	\$9,988	\$342,554	\$549,030
	2nd	\$249,445	\$31,206	\$370,239	\$650,890
	3rd	\$251,546	\$46,628	\$433,952	\$732,126
	4th	\$239,651	\$38,735	\$380,399	\$658,784
2012	1st	\$201,975	\$10,388	\$330,553	\$542,916
	2nd	\$257,012	\$33,251	\$386,105	\$676,368
	3rd	\$239,274	\$33,977	\$422,526	\$695,776
	4th	\$289,438	\$40,155	\$363,085	\$692,678
2013	1st	\$211,641	\$19,701	\$327,448	\$558,790
	2nd	\$239,274	\$26,499	\$344,664	\$610,437
	3rd	\$255,486	\$37,356	\$411,075	\$703,917
	4th	\$223,978	\$40,507	\$365,605	\$630,090
2014	1st	\$196,394	\$19,653	\$310,208	\$526,255
	2nd	\$225,636	\$31,079	\$339,224	\$595,939

**SOURCE:** Fairbanks North Star Borough, Collections Dept., City of Fairbanks Finance Dept., City of North Pole Finance Dept., personal communications, 2009-2014.

**NOTE:** *City of Fairbanks* began collecting Tobacco Product Distribution Sales Tax at (8%) according Ordinance 5074, November 23, 1992; an ordinance to amend FGC Chapter 5, Taxation, by enacting Article V, to establish a distribution sales tax on tobacco products; and setting an effective date of January 16, 1993. *City of North Pole* began collecting (8%) Tobacco Product Distribution Sales tax in January 2011. *FNSB* Code of Ordinance\*, Title 3 Finance and Revenue, Chapter 3.57, Tobacco Distribution Excise Tax (8%), adopted April 22, 2004; effective: July 1, 2004.

\* Current data supercede previous figures reported.

<sup>^</sup> 3rd Quarter of 2010 is inflated due to receipt of large payment from a business that had not paid for an extended amount of time.

### **TOBACCO EXCISE TAX ANNUAL REVENUE**

Fairbanks, North Pole & the Fairbanks North Star Borough  
2009-2013

	City of Fairbanks (8%)	City of North Pole (8%)	FNSB* (8%)
2009	\$748,492	-	\$1,211,414
2010	\$992,398	-	\$1,762,635
2011	\$937,129	\$126,556	\$1,527,144
2012	\$987,700	\$117,771	\$1,502,268
2013	\$930,379	\$124,062	\$1,448,792
<b>% Change 2012-13</b>	<b>-5.8%</b>	<b>5.3%</b>	<b>-3.6%</b>

***A SPOTLIGHT***  
***ON***  
***MINING IN ALASKA***

**\*SPOTLIGHT SOURCE:** *ALASKA'S MINERAL INDUSTRY*, By J.E. Athey, L.A. Harpo, P.S. Lasley and L.K. Freeman, *Special Report 68*, 2013. Report 68 is presented by the State of Alaska, Department of Natural Resources, Division of Geological & Geophysical Surveys (DGGS) publications are available for free at <http://www.dggs.alaska.gov>

# **Alaska's Mineral Industry 2012**

## **Special Report 68**

by  
**J.E. Athey, L.A. Harbo, P.S. Lasley, and L.K. Freeman**

**DEPARTMENT OF NATURAL RESOURCES**  
**Division of Geological & Geophysical Surveys**

in cooperation with

**DEPARTMENT OF COMMERCE, COMMUNITY, AND ECONOMIC DEVELOPMENT**  
**Division of Economic Development**



**STATE OF ALASKA**  
**Sean Parnell, Governor**

**DEPARTMENT OF NATURAL RESOURCES**  
**Joe Balash, Acting Commissioner**

**Division of Geological & Geophysical Surveys**  
**Robert F. Swenson, State Geologist and Director**

**DEPARTMENT OF COMMERCE, COMMUNITY, AND ECONOMIC DEVELOPMENT**  
**Susan K. Bell, Commissioner**

**Division of Economic Development**  
**Joe Jacobson, Director**

Publications produced by the Division of Geological & Geophysical Surveys (DGGs) are available for free download from the DGGs website ([www.dggs.alaska.gov](http://www.dggs.alaska.gov)). Publications on hard-copy or digital media can be examined or purchased in the Fairbanks office:

**Alaska Division of Geological & Geophysical Surveys**  
**3354 College Rd., Fairbanks, Alaska 99709-3707**  
**Phone: (907) 451-5020 Fax (907) 451-5050**  
[dggspubs@alaska.gov](mailto:dggspubs@alaska.gov)  
[www.dggs.alaska.gov](http://www.dggs.alaska.gov)

Alaska State Library  
State Office Building, 8th Floor  
333 Willoughby Avenue  
Juneau, Alaska 99811-0571

Alaska Resource Library & Information  
Services (ARLIS)  
3150 C Street, Suite 100  
Anchorage, Alaska 99503

Elmer E. Rasmuson Library  
University of Alaska Fairbanks  
Fairbanks, Alaska 99775-1005

University of Alaska Anchorage Library  
3211 Providence Drive  
Anchorage, Alaska 99508

This publication, released by the Division of Geological & Geophysical Surveys (DGGs), was produced and printed in Fairbanks, Alaska, by UAF Printing Services, at a cost of \$4.78. Authority to print this and other publications comes from Alaska Statute 41.08.020, which charges DGGs "to determine the potential of Alaskan land for production of metals, minerals, fuels, and geothermal resources; the location and supplies of groundwater and construction materials; the potential geologic hazards to buildings, roads, bridges, and other installations and structures; and . . . conduct such other surveys and investigations as will advance knowledge of the geology of Alaska." In addition, Alaska Statute 41.08.030 states, "The state geologist shall print and publish an annual report and such other special and topical reports and maps as may be desirable for the benefit of the state..."

The State of Alaska Division of Geological & Geophysical Surveys complies with title II of the Americans with Disabilities Act of 1990. This publication is available in alternative communication formats upon request. Please contact Joyce Outten, DGGs Publications Librarian (phone 907-451-5020; fax 907-451-5050; email [dggspubs@alaska.gov](mailto:dggspubs@alaska.gov)) to make any necessary arrangements.

NOTE: Mention of any company or brand name does not constitute endorsement by any branch or employee of the State of Alaska.



# EXECUTIVE SUMMARY

Alaska's Mineral Industry 2012 is the 32nd annual report produced by the Division of Geological & Geophysical Surveys (of the Department of Natural Resources) and the Division of Economic Development (of the Department of Commerce, Community, and Economic Development).

The total reported value of Alaska's mineral industry decreased slightly in 2012 to \$4,113.6 million, less than 1 percent lower than its \$4,138.7 million value in 2011. Alaska's mineral industry continued to demonstrate its strength and size based in part on the great mineral potential of the state and its strategic location. Mineral exploration expenditures in 2012, \$335.1 million, were down about 8 percent from the 2011 level of \$365.1 million. This marked the eighth consecutive year with exploration expenditures exceeding \$100 million.

Development expenditures in Alaska in 2012 increased by almost 26 percent, to approximately \$342.4 million, from the significantly under-reported value of \$271.9 million in 2011. This was the ninth consecutive year development expenditures exceeded \$200 million. Mineral production volumes remained strong, decreasing by only 2 percent in 2012. The estimated gross wholesale (first market) value of mineral production in 2012 decreased to \$3,436.1 million, from \$3,507.7 million in 2011.

Mineral industry employment rose in 2012 to 4,366 full-time-equivalent jobs, an increase of 416 jobs (11 percent) from the 2011 total of 3,950. Production employment in 2012 saw a 10 percent increase, while development employment increased almost 27 percent. Production jobs increased from 2,993 in 2011 to 3,283 in 2012. Development jobs increased from 422 in 2011 to 535 in 2012. Exploration jobs increased from about 535 jobs in 2011 to 548 in 2012, a 2 percent increase. According to Department of Labor and Workforce Development (DLWD), in the ten-year period from 2003 through 2012, mining activities employment, not including oil-and-gas-related jobs, grew by 1,577 jobs, or 107 percent. In the same period, mining wages have grown by more than 18 percent, which is the highest wage growth of any industry in Alaska. The Alaska industry also created an estimated 4,700 indirect jobs.

Estimated revenues in 2012 to the State of Alaska and municipalities from mineral-industry-specific fees, rent, sales, royalties, and taxes amounted to more than \$124.8 million.

Mineral exploration expenditures in Alaska during 2012 were at least \$335.1 million. Exploration was distributed across Alaska, but almost \$154 million (or 46 percent of the exploration funds) was spent in southwestern Alaska and \$90 million was spent in the eastern interior region. Thirty-one projects reported exploration expenditures of \$1 million or more and 33 additional projects expended at least \$100,000. Most exploration funds, approximately 90 percent, were from Canadian sources.

Exploration was conducted in Alaska during 2012 for a wide variety of metals and mineralization styles. Exploration for gold, grouped with other precious metals, and deposits with a mixed group of metals (polymetallic, including copper-gold-porphyry systems) each accounted for about 45 percent of total exploration expenditures. Copper-gold-molybdenum porphyry systems were the major exploration target in 2012, with slightly less than \$123 million in expenditures. More than \$112 million was spent on granite/intrusion-related gold exploration, almost \$25.6 million was spent on various gold-quartz vein projects, and \$45.6 million was spent on base-metal-rich, polymetallic massive-sulfide projects. More than \$24 million was spent on exploration for PGE-nickel-copper, rare-earth element, coal, placer gold, and graphite deposits, including significant expenditures exploring for iron-titanium-rich beach placer deposits.

Three advanced exploration projects, Pebble, Livengood, and Donlin Creek, accounted for almost 59 percent of the exploration expenditures in 2012. Lode exploration employment tracked exploration expenditures closely. Placer exploration employment was highest in the eastern interior region, however placer exploration expenditures were highest in the western region due to Placer Marine Mining Inc.'s \$6 million project exploring for placer gold off the coast of Nome.

Prospecting sites and mining claims were staked across all regions of Alaska. New mining claims staked during 2012 included 5,116 new state claims and 202 new state prospecting sites. State claim staking decreased by 25 percent in 2012, while staking of state prospecting sites increased by 12 percent.

As part of the Strategic and Critical Minerals Assessment project, a state-funded capital-improvement project to evaluate Alaska's potential for strategic and critical minerals, the Alaska Division of Geological & Geophysical Surveys (DGGs) conducted geologic mapping and minerals-related studies in the Ray Mountains–Dalton Highway area in interior Alaska and contracted helicopter-borne geophysical surveys for the Farewell and Aniak–Iditarod areas of southwestern and western Alaska.

Reported and estimated development expenditures in 2012 totaled approximately \$342.4 million. Development expenditures were reported for 51 projects in 2012. Significant development expenditures were noted at Fort Knox Mine, Greens Creek Mine, Pogo Mine, Kensington Mine, Red Dog Mine, and Nixon Fork Mine. Based on expenditures, Fort Knox Mine was the largest mineral development project in Alaska in 2012.

The total value of mineral production in Alaska during 2012 is estimated at \$3.44 billion, slightly below the 2011 estimated value of \$3.51 billion. The 2012 estimate represents a decrease in value of approximately \$71.6 million, or 2 percent, from the 2011 estimate. Metals (gold, silver, copper, lead, and zinc) account for \$3,295.52 million (almost 96 percent of the total); coal and peat for \$72.48 million (2.1 percent of the total); and industrial minerals for \$68.07 million (2.0 percent of the total). Gold leads all mineral product values, with almost 45 percent of the total, followed by zinc at 33.16 percent, silver at 11.16 percent, lead at 6.83 percent, coal and peat at 2.11 percent, and industrial minerals at 1.98 percent. The decreased mineral production value in 2012 compared with 2011 resulted primarily from lower production volumes of zinc and a lower value for zinc, silver, copper, and lead in 2012 compared with 2011. The price for gold increased 6.2 percent in 2012.

Alaska currently has six large lode mines. Teck Resources Ltd.–NANA's Red Dog Mine produced 529,157 tons of zinc, 95,282 tons of lead, and 5.89 million ounces of silver. Coeur's Kensington underground gold mine complex near Juneau produced 82,125 ounces of gold in 2012. Hecla Mining Co.'s Greens Creek Mine near Juneau produced almost 6.4 million ounces of silver in 2012, along with 55,496 ounces of gold, 64,249 tons of zinc, and 21,074 tons of lead. Kinross Gold's Fort Knox Mine near Fairbanks produced 359,948 ounces of gold, and Sumitomo's Pogo Mine produced 315,886 ounces of gold. Usibelli Coal Mine produced more than 2 million tons of coal. Placer gold production, from an estimated 312 operators, was about 100,000 ounces.

# EMPLOYMENT

## CIVILIAN LABOR FORCE UNEMPLOYMENT RATES\*

Fairbanks MSA, Alaska and the United States  
2008-2014

		2008	2009	2010	2011	2012	2013	2014
<b>F</b>	January	6.4	7.7	8.5	7.9	7.5	7.2	6.5
<b>A</b>	February	6.3	7.6	8.3	7.6	7.4	6.7	6.6
<b>I</b>	March	6.1	7.5	8.1	7.3	7.1	6.2	6.2
<b>R</b>	April	5.5	6.8	7.2	6.7	6.5	5.9	5.4
<b>B</b>	May	5.5	6.9	6.5	6.3	6.0	5.6	5.3
<b>A</b>	June	6.2	7.6	6.7	6.9	6.6	6.4	6.2
<b>N</b>	July	5.5	6.7	6.2	6.2	6.1	5.5	
<b>K</b>	August	5.3	6.3	6.0	6.1	5.5	5.2	
<b>S</b>	September	5.3	6.6	6.0	5.9	5.1	5.0	
	October	5.5	6.9	6.2	6.0	5.1	5.2	
<b>M</b>	November	5.9	7.0	6.8	6.4	5.6	5.4	
<b>S</b>	December	6.4	7.3	7.0	6.8	6.2	5.4	
<b>A</b>	<b>Average</b>	<b>5.8</b>	<b>7.1</b>	<b>6.9</b>	<b>6.7</b>	<b>6.2</b>	<b>5.8</b>	
	January	7.1	8.0	9.2	8.8	8.1	7.8	7.4
	February	7.1	8.3	9.3	8.6	8.0	7.4	7.7
	March	7.1	8.2	9.1	8.3	7.8	7.0	7.3
<b>A</b>	April	6.4	7.7	8.4	7.8	7.2	6.6	6.4
<b>L</b>	May	6.3	7.5	7.6	7.3	6.8	6.3	6.0
<b>A</b>	June	6.5	8.0	7.8	7.7	7.3	6.9	6.8
<b>S</b>	July	5.8	7.2	7.1	6.9	6.6	6.0	
<b>K</b>	August	5.7	7.0	6.9	6.7	6.2	5.8	
<b>A</b>	September	5.7	7.3	7.0	6.8	5.9	5.8	
	October	5.9	7.7	7.2	6.9	6.0	6.2	
	November	6.4	7.8	7.8	7.3	6.4	6.3	
	December	6.9	8.2	8.1	7.7	7.0	6.5	
	<b>Average</b>	<b>6.4</b>	<b>7.7</b>	<b>8.0</b>	<b>7.6</b>	<b>6.9</b>	<b>6.5</b>	
<b>U</b>	January	5.4	8.5	10.6	9.8	8.8	8.5	7.0
<b>N</b>	February	5.2	8.9	10.4	9.5	8.7	8.1	7.0
<b>I</b>	March	5.2	9.0	10.2	9.2	8.4	7.6	6.8
<b>T</b>	April	4.8	8.6	9.5	8.7	7.7	7.1	5.9
<b>E</b>	May	5.2	9.1	9.3	8.7	7.9	7.3	6.1
<b>D</b>	June	5.7	9.7	9.6	9.3	8.4	7.8	6.3
	July	6.0	9.7	9.7	9.3	8.6	7.7	
<b>S</b>	August	6.1	9.6	9.5	9.1	8.2	7.3	
<b>T</b>	September	6.0	9.5	9.2	8.8	7.6	7.0	
<b>A</b>	October	6.1	9.5	9.0	8.5	7.5	7.0	
<b>T</b>	November	6.5	9.4	9.3	8.2	7.4	6.6	
<b>E</b>	December	7.1	9.7	9.1	8.3	7.6	6.5	
<b>S</b>	<b>Average</b>	<b>5.8</b>	<b>9.3</b>	<b>9.6</b>	<b>8.9</b>	<b>8.1</b>	<b>7.4</b>	

**SOURCES:** Alaska Department of Labor, Research and Analysis Section, website: <http://www.laborstats.alaska.gov>, and personal communications 2008-2014. U.S. Department of Labor, Bureau of Labor Statistics, *Current Population Survey*, and website: <http://www.bls.gov>, 2008-2014.

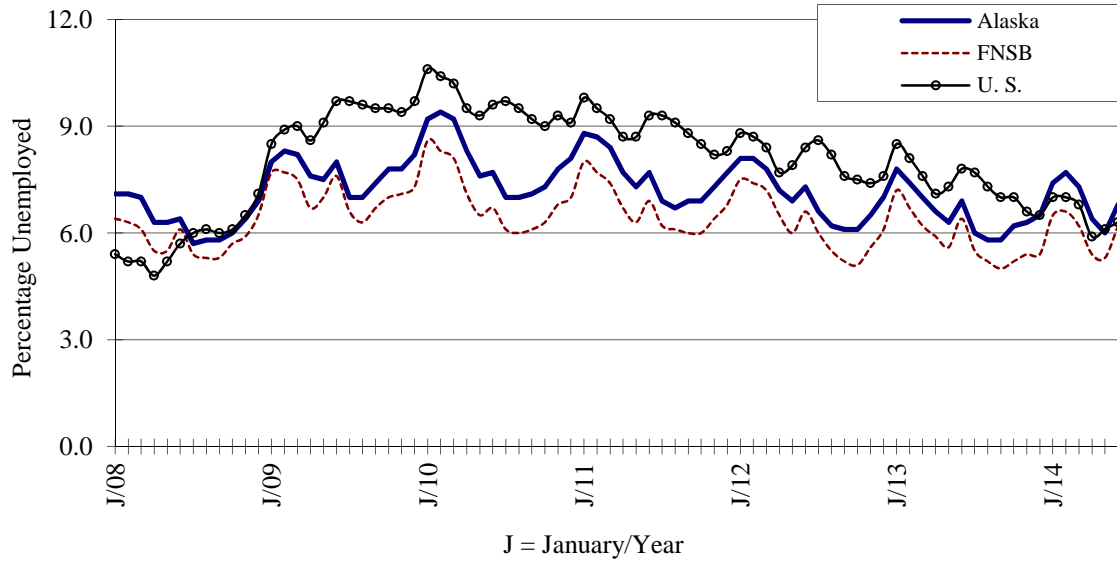
**NOTE:** Rates presented are "not seasonally adjusted". A change in the way the labor force statistics are calculated for boroughs and census areas makes data prior to 2000 not comparable with later data.

\* May be subject to revision.

## Employment

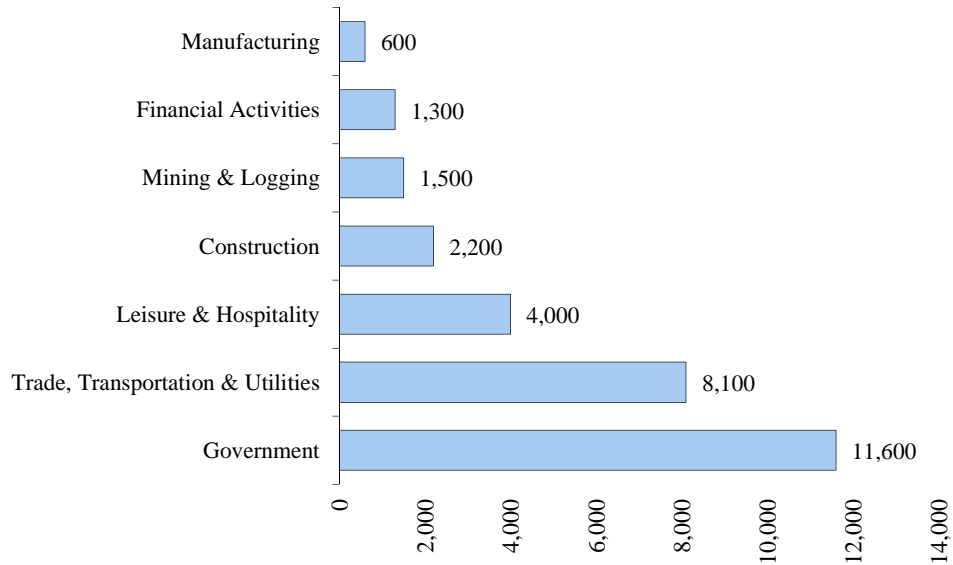
### CIVILIAN LABOR FORCE UNEMPLOYMENT RATES

State of Alaska, FNSB, the United States  
2008-2014



### AVERAGE MONTHLY EMPLOYMENT ESTIMATES BY SECTOR

Fairbanks North Star Borough  
Second Quarter Average - 2014



## Employment

### AVERAGE MONTHLY EMPLOYMENT ESTIMATES BY INDUSTRY

Fairbanks North Star Borough (MSA<sup>1</sup>)  
2014

Industry	2014		Year-to-Date Average		% Change 2013-14
	1st Qtr	2nd Qtr	2014 Jan-Jun	2013 Jan-Jun	
<b>Reporting Period</b>					
<b>Mining and Logging<sup>3</sup></b>	<b>1,400</b>	<b>1,600</b>	<b>1,500</b>	<b>1,400</b>	<b>7.1%</b>
<b>Construction</b>	<b>1,900</b>	<b>2,600</b>	<b>2,200</b>	<b>2,100</b>	<b>4.8%</b>
<b>Manufacturing</b>	<b>600</b>	<b>600</b>	<b>600</b>	<b>600</b>	<b>0.0%</b>
<b>Trade, Transportation, Utilities</b>	<b>7,800</b>	<b>8,400</b>	<b>8,100</b>	<b>7,600</b>	<b>6.6%</b>
Wholesale Trade	700	800	700	700	0.0%
Retail Trade	4,600	4,800	4,700	4,600	2.2%
Trans/Warehouse/Utilities	2,400	2,800	2,600	2,400	8.3%
<b>Information</b>	<b>500</b>	<b>500</b>	<b>500</b>	<b>500</b>	<b>0.0%</b>
<b>Financial Activities</b>	<b>1,200</b>	<b>1,300</b>	<b>1,300</b>	<b>1,300</b>	<b>0.0%</b>
<b>Professional &amp; Business Svcs</b>	<b>2,000</b>	<b>2,100</b>	<b>2,100</b>	<b>2,400</b>	<b>-12.5%</b>
<b>Educational &amp; Health Services</b>	<b>5,400</b>	<b>5,400</b>	<b>5,400</b>	<b>5,300</b>	<b>1.9%</b>
Health Care	3,900	3,900	3,900	4,000	-2.5%
<b>Leisure &amp; Hospitality</b>	<b>3,800</b>	<b>4,200</b>	<b>4,000</b>	<b>4,100</b>	<b>-2.4%</b>
<b>Other Services</b>	<b>1,200</b>	<b>1,200</b>	<b>1,200</b>	<b>1,300</b>	<b>-7.7%</b>
<b>Government</b>	<b>11,700</b>	<b>11,500</b>	<b>11,600</b>	<b>11,800</b>	<b>-1.7%</b>
Federal Government	2,700	2,900	2,800	3,100	-9.7%
State Government	5,300	5,400	5,500	5,400	1.9%
Local Government <sup>2</sup>	3,400	3,200	3,300	3,300	0.0%
<b>Total Nonfarm</b>	<b>37,500</b>	<b>39,500</b>	<b>38,500</b>	<b>38,300</b>	<b>0.5%</b>

**SOURCE:** Alaska Department of Labor and Workforce Development, Research and Analysis Section; U.S. Department of Labor, Bureau of Labor Statistics. State website: <http://labor.alaska.gov/research/ces/ces.htm>, 2014.

**NOTE:** Data provided are subject to change. Employment reporting format has changed because Fairbanks became a metropolitan area in 2003 and 2004. Please note that rounding is to nearest 100.

- Excludes self-employed workers, fishers, domestics, and unpaid family workers.

- Government includes employees of public school systems and the University of Alaska.

- Beginning January 2001, wage and salary employment estimates were published under a new classification system. The Standard Industrial Classification system (SIC) has been replaced by the North American Industry Classification System (NAICS). Data prior to 2001 are comparable only at the Total Nonfarm and Government levels.

<sup>1</sup> Metropolitan Statistical Area.

## Employment

### ANNUAL AVERAGE MONTHLY EMPLOYMENT BY INDUSTRY

Fairbanks North Star Borough  
2010-2013

Industry	2010	2011	2012	2013	% Change 2012-13
<b>Natural Resources &amp; Mining</b>	<b>1,161</b>	<b>1,330</b>	<b>1,517</b>	<b>1,489</b>	<b>-1.8%</b>
<b>Agriculture, Forestry, Fishing, Hunting</b>	<b>45</b>	<b>48</b>	<b>49</b>	<b>48</b>	<b>-2.0%</b>
<b>Mining</b>	<b>1,117</b>	<b>1,282</b>	<b>1,468</b>	<b>1,441</b>	<b>-1.8%</b>
<b>Construction</b>	<b>2,641</b>	<b>2,596</b>	<b>2,618</b>	<b>2,431</b>	<b>-7.1%</b>
Construction of Buildings	751	771	806	654	-18.9%
Heavy Construction	374	404	331	426	28.7%
Specialty Trade Contractors	1,517	1,421	1,482	1,351	-8.8%
<b>Manufacturing</b>	<b>604</b>	<b>575</b>	<b>556</b>	<b>616</b>	<b>10.8%</b>
<b>Trade, Transportation &amp; Utilities</b>	<b>7,642</b>	<b>7,760</b>	<b>7,910</b>	<b>7,789</b>	<b>-1.5%</b>
<b>Wholesale Trade</b>	<b>654</b>	<b>661</b>	<b>705</b>	<b>735</b>	<b>4.3%</b>
<b>Retail Trade</b>	<b>4,551</b>	<b>4,659</b>	<b>4,734</b>	<b>4,643</b>	<b>-1.9%</b>
Food & Beverage	471	463	480	461	-4.0%
General Merchandise	1,341	1,338	1,352	1,299	-3.9%
<b>Transportation &amp; Warehousing</b>	<b>2,020</b>	<b>2,016</b>	<b>2,077</b>	<b>2,018</b>	<b>-2.8%</b>
Air Transportation	607	593	595	538	-9.6%
Transit & Ground Passenger	299	295	303	305	0.7%
<b>Information</b>	<b>497</b>	<b>549</b>	<b>548</b>	<b>485</b>	<b>-11.5%</b>
Telecommunication	296	293	297	243	-18.2%
<b>Financial Activities</b>	<b>1,553</b>	<b>1,445</b>	<b>1,427</b>	<b>1,416</b>	<b>-0.8%</b>
<b>Finance &amp; Insurance</b>	<b>877</b>	<b>799</b>	<b>805</b>	<b>784</b>	<b>-2.6%</b>
Credit Intermediation, etc.	517	510	513	513	0.0%
<b>Real Estate, Renting &amp; Leasing</b>	<b>676</b>	<b>647</b>	<b>622</b>	<b>632</b>	<b>1.6%</b>
Real Estate	428	404	387	406	4.9%
<b>Professional &amp; Business Services</b>	<b>2,368</b>	<b>2,511</b>	<b>2,517</b>	<b>2,402</b>	<b>-4.6%</b>
<b>Professional, Scientific, Technical Services</b>	<b>1,515</b>	<b>1,539</b>	<b>1,494</b>	<b>1,472</b>	<b>-1.5%</b>
<b>Management of Companies &amp; Enterprises</b>	<b>53</b>	<b>120</b>	<b>118</b>	<b>122</b>	<b>3.4%</b>
<b>Administrative &amp; Waste Services</b>	<b>800</b>	<b>852</b>	<b>905</b>	<b>808</b>	<b>-10.7%</b>
<b>Educational &amp; Health Services</b>	<b>4,910</b>	<b>4,951</b>	<b>5,155</b>	<b>5,229</b>	<b>1.4%</b>
<b>Health Care &amp; Social Assistance</b>	<b>4,675</b>	<b>4,720</b>	<b>4,910</b>	<b>5,012</b>	<b>2.1%</b>
<b>Leisure &amp; Hospitality</b>	<b>4,084</b>	<b>4,129</b>	<b>4,189</b>	<b>4,180</b>	<b>-0.2%</b>
Accommodation	969	1,029	1,074	1,089	1.4%
Food Services & Drinking Places	2,671	2,691	2,672	2,636	-1.3%
<b>Other Services</b>	<b>1,116</b>	<b>1,132</b>	<b>1,183</b>	<b>1,151</b>	<b>-2.7%</b>
Membership Organizations, etc.	510	509	500	408	-18.4%
Repair & Maintenance	403	403	421	496	17.8%
<b>Government</b>	<b>12,072</b>	<b>12,010</b>	<b>11,677</b>	<b>11,641</b>	<b>-0.3%</b>
Federal Government	3,495	3,434	3,264	3,026	-7.3%
State Government	5,487	5,461	5,445	5,472	0.5%
Local Government	3,090	3,115	2,968	3,143	5.9%
<b>Unclassified Establishments</b>	<b>39</b>	<b>29</b>	<b>27</b>	<b>33</b>	<b>22.2%</b>
<b>Total Industries</b>	<b>38,688</b>	<b>39,018</b>	<b>39,323</b>	<b>38,859</b>	<b>-1.2%</b>

**SOURCE:** Alaska Department of Labor and Workforce Development, Research and Analysis Section; *Quarterly Census of Employment & Wages-Annual Review 2013*, (data are preliminary and subject to revision).

**NOTE:** Blanks in the Total Earnings and Average Monthly Earnings columns due to confidentiality; data are suppressed.

## Employment

### ANNUAL AVERAGE MONTHLY WAGE BY INDUSTRY

Fairbanks North Star Borough  
2010-2013

Industry	2010	2011	2012	2013	% Change 2012-13
<b>Natural Resources &amp; Mining</b>	<b>\$7,348</b>	<b>\$7,311</b>	<b>\$7,559</b>	<b>\$7,455</b>	<b>-1.4%</b>
<b>Agriculture, Forestry, Fishing, Hunting</b>	<b>\$1,711</b>	<b>\$1,506</b>	<b>\$1,513</b>	<b>\$1,509</b>	<b>-0.3%</b>
<b>Mining</b>	<b>\$7,574</b>	<b>\$7,530</b>	<b>\$7,761</b>	<b>\$7,654</b>	<b>-1.4%</b>
<b>Construction</b>	<b>\$5,922</b>	<b>\$5,881</b>	<b>\$6,146</b>	<b>\$6,306</b>	<b>2.6%</b>
Construction of Buildings	\$5,382	\$5,406	\$5,222	\$5,363	2.7%
Heavy Construction	\$6,217	\$6,809	\$7,863	\$7,958	1.2%
Specialty Trade Contractors	\$6,117	\$5,874	\$6,261	\$6,241	-0.3%
<b>Manufacturing</b>	<b>\$4,416</b>	<b>\$4,618</b>	<b>\$4,664</b>	<b>\$4,436</b>	<b>-4.9%</b>
<b>Trade, Transportation &amp; Utilities</b>	<b>\$3,240</b>	<b>\$3,274</b>	<b>\$3,307</b>	<b>\$3,376</b>	<b>2.1%</b>
<b>Wholesale Trade</b>	<b>\$4,035</b>	<b>\$4,223</b>	<b>\$4,345</b>	<b>\$4,540</b>	<b>4.5%</b>
<b>Retail Trade</b>	<b>\$2,549</b>	<b>\$2,563</b>	<b>\$2,603</b>	<b>\$2,604</b>	<b>0.0%</b>
Food & Beverage	\$2,358	\$2,417	\$2,402	\$2,259	-6.0%
General Merchandise	\$2,342	\$2,340	\$2,328	\$2,377	2.1%
<b>Transportation &amp; Warehousing</b>	<b>\$3,849</b>	<b>\$3,858</b>	<b>\$3,808</b>	<b>\$3,966</b>	<b>4.1%</b>
Air Transportation	\$3,693	\$3,552	\$3,389	\$3,905	15.2%
Transit & Ground Passenger	<b>\$2,272</b>	<b>\$2,307</b>	<b>\$2,419</b>	<b>\$2,390</b>	<b>-1.2%</b>
<b>Information</b>	<b>\$4,258</b>	<b>\$4,123</b>	<b>\$4,096</b>	<b>\$4,468</b>	<b>9.1%</b>
Telecommunication	\$5,026	\$5,407	\$5,262	\$6,288	19.5%
<b>Financial Activities</b>	<b>\$3,878</b>	<b>\$3,847</b>	<b>\$3,907</b>	<b>\$4,011</b>	<b>2.7%</b>
<b>Finance &amp; Insurance</b>	<b>\$4,238</b>	<b>\$4,086</b>	<b>\$4,166</b>	<b>\$4,285</b>	<b>2.9%</b>
Credit Intermediation, etc.	\$3,914	\$3,997	\$4,113	\$4,070	-1.0%
<b>Real Estate, Renting &amp; Leasing</b>	<b>\$3,410</b>	<b>\$3,552</b>	<b>\$3,572</b>	<b>\$3,673</b>	<b>2.8%</b>
Real Estate	\$3,236	\$3,269	\$3,343	\$3,433	2.7%
<b>Professional &amp; Business Services</b>	<b>\$3,848</b>	<b>\$3,891</b>	<b>\$4,137</b>	<b>\$4,256</b>	<b>2.9%</b>
<b>Professional, Scientific, Technical Services</b>	<b>\$4,229</b>	<b>\$4,199</b>	<b>\$4,443</b>	<b>\$4,608</b>	<b>3.7%</b>
<b>Management of Companies &amp; Enterprises</b>	<b>\$5,871</b>	<b>\$6,321</b>	<b>\$7,241</b>	<b>\$7,294</b>	<b>0.7%</b>
<b>Administrative &amp; Waste Services</b>	<b>\$2,996</b>	<b>\$2,990</b>	<b>\$3,227</b>	<b>\$3,157</b>	<b>-2.2%</b>
<b>Educational &amp; Health Services</b>	<b>\$3,472</b>	<b>\$3,642</b>	<b>\$3,684</b>	<b>\$3,777</b>	<b>2.5%</b>
<b>Health Care &amp; Social Assistance</b>	<b>\$3,512</b>	<b>\$3,691</b>	<b>\$3,737</b>	<b>\$3,842</b>	<b>2.8%</b>
<b>Leisure &amp; Hospitality</b>	<b>\$1,487</b>	<b>\$1,531</b>	<b>\$1,550</b>	<b>\$1,617</b>	<b>4.3%</b>
Accommodation	\$2,183	\$2,189	\$2,159	\$2,241	3.8%
Food Services & Drinking Places	\$1,278	\$1,303	\$1,327	\$1,387	4.5%
<b>Other Services</b>	<b>\$2,369</b>	<b>\$2,483</b>	<b>\$2,394</b>	<b>\$2,378</b>	<b>-0.7%</b>
Membership Organizations, etc.	\$1,852	\$1,949	\$1,916	\$1,907	-0.5%
Repair & Maintenance	\$3,389	\$3,625	\$3,497	\$3,472	-0.7%
<b>Government</b>	<b>\$4,297</b>	<b>\$4,423</b>	<b>\$4,549</b>	<b>\$4,510</b>	<b>-0.9%</b>
Federal Government	\$5,220	\$5,469	\$5,585	\$5,565	-0.4%
State Government	\$4,004	\$4,077	\$4,172	\$4,226	1.3%
Local Government	\$3,774	\$3,877	\$4,101	\$3,989	-2.7%
<b>Unclassified Establishments</b>	<b>\$2,081</b>	<b>\$1,641</b>	<b>\$1,451</b>	<b>\$1,872</b>	<b>29.0%</b>
<b>Total Industries</b>	<b>\$3,789</b>	<b>\$3,870</b>	<b>\$3,968</b>	<b>\$3,997</b>	<b>0.7%</b>

**SOURCE:** Alaska Department of Labor and Workforce Development, Research and Analysis Section; *Quarterly Census of Employment & Wages - Annual Review 2013*, (data are preliminary and subject to revision).

**NOTE:** Blanks in the Total Earnings and Average Monthly Earnings columns due to confidentiality; data are suppressed.



## Employment

### QUARTERLY CENSUS OF EMPLOYMENT AND WAGES BY INDUSTRY\*

Fairbanks North Star Borough

By Quarter

Industry	--3Q 2013 Avg Mo--		--4Q 2013 Avg Mo--		% Chg from prev Qtr	
	Employmt	Wage	Employmt	Wage	Employmt	Wage
<b>Natural Resources &amp; Mining</b>	<b>1,686</b>	<b>\$7,315</b>	<b>1,431</b>	<b>\$7,977</b>	<b>-15.1%</b>	<b>9.0%</b>
<b>Agriculture, Forestry, Fishing, Hunting</b>	<b>52</b>	<b>\$1,648</b>	<b>21</b>	<b>\$1,840</b>	<b>-59.6%</b>	<b>11.7%</b>
<b>Mining</b>	<b>1,634</b>	<b>\$7,495</b>	<b>1,410</b>	<b>\$8,070</b>	<b>-13.7%</b>	<b>7.7%</b>
<b>Construction</b>	<b>3,093</b>	<b>\$6,832</b>	<b>2,495</b>	<b>\$6,858</b>	<b>-19.3%</b>	<b>0.4%</b>
Construction of Buildings	818	\$5,720	645	\$5,747	-21.1%	0.5%
Heavy Construction	531	\$7,994	560	\$9,021	5.5%	12.8%
Specialty Trade Contractors	1,743	\$7,004	1,290	\$6,474	-26.0%	-7.6%
<b>Manufacturing</b>	<b>662</b>	<b>\$4,355</b>	<b>652</b>	<b>\$4,248</b>	<b>-1.5%</b>	<b>-2.5%</b>
<b>Trade, Transportation &amp; Utilities</b>	<b>8,159</b>	<b>\$3,366</b>	<b>7,747</b>	<b>\$3,438</b>	<b>-5.0%</b>	<b>2.1%</b>
<b>Wholesale Trade</b>	<b>753</b>	<b>\$4,533</b>	<b>742</b>	<b>\$4,653</b>	<b>-1.5%</b>	<b>2.6%</b>
<b>Retail Trade</b>	<b>4,743</b>	<b>\$2,589</b>	<b>4,694</b>	<b>\$2,657</b>	<b>-1.0%</b>	<b>2.6%</b>
Food & Beverage	477	\$2,233	482	\$2,178	1.0%	-2.5%
General Merchandise Stores	1,311	\$2,478	1,329	\$2,314	1.4%	-6.6%
<b>Transportation &amp; Warehousing</b>	<b>2,249</b>	<b>\$3,954</b>	<b>1,928</b>	<b>\$3,980</b>	<b>-14.3%</b>	<b>0.7%</b>
Air Transportation	555	\$4,114	518	\$3,482	-6.7%	-15.4%
Transit & Ground Passenger	289	\$2,008	326	\$2,613	12.8%	30.1%
<b>Information</b>	<b>488</b>	<b>\$4,374</b>	<b>499</b>	<b>\$4,408</b>	<b>2.3%</b>	<b>0.8%</b>
Telecommunication	233	\$6,328	247	\$6,202	6.0%	-2.0%
<b>Financial Activities</b>	<b>1,447</b>	<b>\$3,875</b>	<b>1,391</b>	<b>\$4,245</b>	<b>-3.9%</b>	<b>9.5%</b>
<b>Finance &amp; Insurance</b>	<b>788</b>	<b>\$4,057</b>	<b>776</b>	<b>\$4,534</b>	<b>-1.5%</b>	<b>11.8%</b>
Credit Intermediation, etc.	507	\$3,963	513	\$4,082	1.2%	3.0%
<b>Real Estate, Renting &amp; Leasing</b>	<b>659</b>	<b>\$3,656</b>	<b>615</b>	<b>\$3,878</b>	<b>-6.7%</b>	<b>6.1%</b>
Real Estate	421	\$3,395	398	\$3,576	-5.5%	5.3%
<b>Professional &amp; Business Services</b>	<b>2,538</b>	<b>\$4,191</b>	<b>2,351</b>	<b>\$4,710</b>	<b>-7.4%</b>	<b>12.4%</b>
<b>Professional, Scientific, Technical Services</b>	<b>1,555</b>	<b>\$4,546</b>	<b>1,476</b>	<b>\$5,122</b>	<b>-5.1%</b>	<b>12.7%</b>
<b>Management of Companies &amp; Enterprises</b>	<b>124</b>	<b>\$5,631</b>	<b>124</b>	<b>\$9,981</b>	<b>0.0%</b>	<b>77.3%</b>
<b>Administrative &amp; Waste Services</b>	<b>859</b>	<b>\$3,340</b>	<b>751</b>	<b>\$3,032</b>	<b>-12.6%</b>	<b>-9.2%</b>
<b>Educational &amp; Health Services</b>	<b>5,274</b>	<b>\$3,717</b>	<b>5,160</b>	<b>\$4,076</b>	<b>-2.2%</b>	<b>9.7%</b>
<b>Health Care &amp; Social Assistance</b>	<b>5,059</b>	<b>\$3,775</b>	<b>4,953</b>	<b>\$4,142</b>	<b>-2.1%</b>	<b>9.7%</b>
<b>Leisure &amp; Hospitality</b>	<b>4,717</b>	<b>\$1,635</b>	<b>3,879</b>	<b>\$1,748</b>	<b>-17.8%</b>	<b>6.9%</b>
Accommodation	1,431	\$2,027	936	\$2,672	-34.6%	31.8%
Food Services & Drinking Places	2,743	\$1,456	2,536	\$1,442	-7.5%	-1.0%
<b>Other Services</b>	<b>1,186</b>	<b>\$2,364</b>	<b>1,117</b>	<b>\$2,432</b>	<b>-5.8%</b>	<b>2.9%</b>
Repair & Maintenance	417	\$3,482	393	\$3,564	-5.8%	2.4%
Membership Organizations, etc.	510	\$1,885	484	\$1,966	-5.1%	4.3%
<b>Government</b>	<b>11,073</b>	<b>\$4,592</b>	<b>12,010</b>	<b>\$4,426</b>	<b>8.5%</b>	<b>-3.6%</b>
Federal Government	3,026	\$5,520	2,863	\$5,533	-5.4%	0.2%
State Government	5,375	\$4,601	5,667	\$4,391	5.4%	-4.6%
Local Government	2,672	\$3,521	3,479	\$3,573	30.2%	1.5%
<b>Unclassified Establishments</b>	<b>83</b>	<b>\$1,999</b>	<b>42</b>	<b>\$2,310</b>	<b>-49.4%</b>	<b>15.6%</b>
<b>Total Industries</b>	<b>40,407</b>	<b>\$4,042</b>	<b>38,774</b>	<b>\$4,025</b>	<b>-4.0%</b>	<b>-0.4%</b>

**SOURCE:** Alaska Department of Labor and Workforce Development, Research and Analysis Section; *Quarterly Census of Employment & Wages (QCEW)* fka *Employment & Earnings Summary*, State of Alaska website: <http://almis.labor.state.ak.us> and personal communications, 4th Qtr. 2013.

\* All numbers are preliminary and subject to revision. There is an approximate 6 month lag in data release.



# HOUSING

**APARTMENT / MULTI-PLEX VACANCY RATES ^**  
Fairbanks North Star Borough  
2010-2014

	2010	2011^	2012	2013	2014
	-----Percent Vacant -----				
March	6.9	8.8	8.7	9.5	15.0
June	7.6	10.2	2.1	8.3	15.8
September	8.9	13.3	6.1	12.7	
December	10.1	15.5	9.6	14.7	

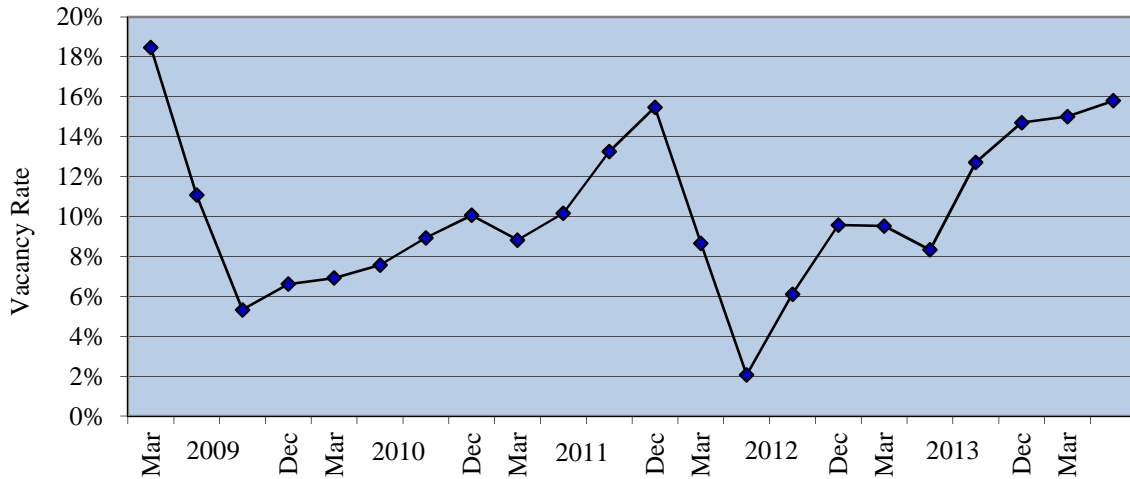
**SOURCE:** FNSB Community Research Center Rental Survey, 2009-2014.

**NOTE:** Vacancy rates are based on a sample of 3,000 to 4,000 rental units and include data for apartments, duplexes, tri-plexes and larger multi-plex rental properties. They do not include single-family houses, mobile homes or cabins. Changes in seasonal apartment availability may also factor into the Fall and Winter figures.

**Vacancy influences:** The Ft. Wainwright Army 172nd Stryker Brigade was deployed to Iraq in Fall-Winter 2008-09, Spring-Summer 2011-12, and the Military Police in Fall-Winter 2013-2014. Ft. Wainwright base housing privatized and contracted management to New Haven Communities in May 2009 with additional new construction through 2013. Weeks Field Estates has replaced Fairview Manor with 130 affordable housing units in 2009-2011. Walden Estates, once off-base military housing, privatized and placed 150 units; 3-5 bdrms., on the market for sale or rent (27:duplexes; 23:4-plexes; 4:houses) in June 2010 (PHII). The Ft. Wainwright Army 1st Battalion, 52nd Aviation Regiment, approximately 360 soldiers, deployed for nine-month tour beginning March 2014. The 6th Squadron, 17th Cavalry Regiment, U.S. Army Alaska Aviation Task Force, approximately 400 soldiers, deployed for a nine-month tour beginning May 2014.

^ Correction made to March 2011 data on June 24, 2011.

**APARTMENT / MULTI-PLEX VACANCY RATES**  
Fairbanks North Star Borough  
2009-2014



## Housing

### RENTAL HOUSING UNITS AVAILABLE ^

Fairbanks North Star Borough  
2010-2014

	----- Apartments -----				----- Houses -----				Mobile Homes	Cabins	Total Rentals
	Eff.	1-BR	2-BR	3+BR	1-BR	2-BR	3-BR	4+BR			
<b>2010</b>											
March	38	95	93	74	5	5	16	6	NA	16	<b>348</b>
June	34	64	107	108	2	5	8	6	2	10	<b>346</b>
September	70	121	112	103	1	16	36	15	6	21	<b>501</b>
December	51	173	143	80	5	15	18	12	2	23	<b>522</b>
<b>2011</b>											
March ^	41	146	120	66	5	11	8	15	1	12	<b>425</b>
June	40	170	180	116	4	16	45	7	3	30	<b>611</b>
September	84	199	239	100	9	25	45	12	3	35	<b>751</b>
December	64	242	214	134	9	17	19	22	3	26	<b>750</b>
<b>2012</b>											
March	30	159	121	41	1	4	15	9	4	21	<b>405</b>
June	10	35	57	18	0	8	9	5	3	29	<b>174</b>
September	29	65	103	114	3	9	38	16	1	28	<b>406</b>
December	24	114	128	141	1	4	12	13	NA	22	<b>459</b>
<b>2013</b>											
March	20	114	124	147	2	7	18	10	2	11	<b>455</b>
June	22	72	128	119	4	9	19	11	2	18	<b>404</b>
September	30	100	166	163	5	23	48	23	3	32	<b>593</b>
December	23	182	236	118	8	19	80	17	7	32	<b>722</b>
<b>2014</b>											
March	25	154	271	137	8	12	39	14	10	20	<b>690</b>
June	38	155	261	114	5	9	15	18	5	27	<b>647</b>
<b>% Change</b>											
<b>2013-14</b>	<b>73%</b>	<b>115%</b>	<b>104%</b>	<b>-4%</b>	<b>25%</b>	<b>0%</b>	<b>-21%</b>	<b>64%</b>	<b>150%</b>	<b>50%</b>	
<b>Jun.</b>											

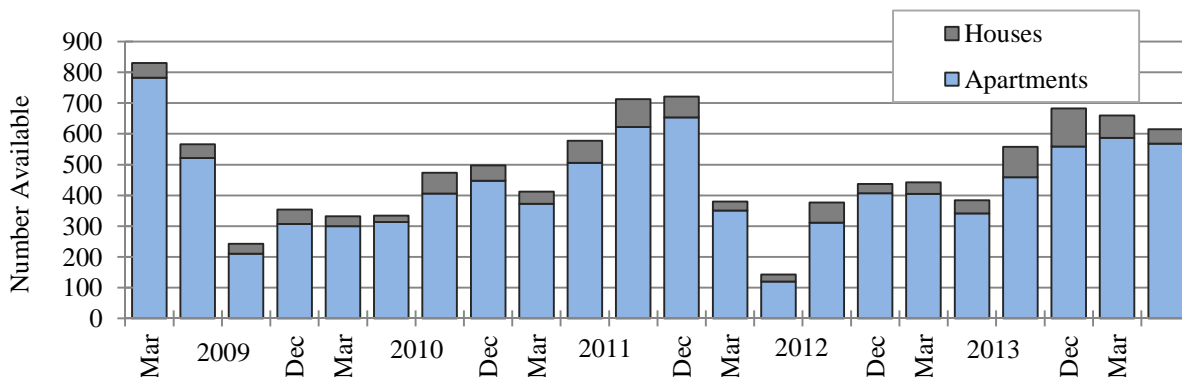
**SOURCE:** Community Research Center rental surveys, 2010-2014, including most major apartment complexes, *Fairbanks Daily News-Miner* advertisements, and <http://www.craigslist.com> during the week surrounding the 19th of March, June, September and March.

**NOTE:** Aging Fairview Manor demolished the last units in the fall 2011. Weeks Field Estates has replaced them with 130 affordable housing units in 2009-2011. Walden Estates, once off-base military housing, privatized and placed 150 units; 3-5 bdrms. on the market for sale or rent (27:duplexes; 23:4-plexes; 4:houses) in June 2010 (PHI). By September 2010 all units were under contract with none available for rent. B&B's come off survey in May & back on in September. See *Vacancy Rates* footer for military deployments. NA represents not available.

^ Correction made to March 2011 data on June 24, 2011.

### RENTAL HOUSING UNITS AVAILABLE

Fairbanks North Star Borough  
2009-2014



## Housing

### AVERAGE MONTHLY RENTS FOR AVAILABLE HOUSING UNITS ^

Fairbanks North Star Borough  
2010-2014

	Apartments				Houses				Mobile Homes	Cabins
	Eff.	1-BR	2-BR	3+ BR	1-BR	2-BR	3-BR	4+ BR		
<b>2010</b>										
March	\$617	\$817	\$1,028	\$1,763	\$960	\$1,489	\$1,516	\$2,073	NA	\$562
June	\$685	\$874	\$1,063	\$1,837	\$1,125	\$1,310	\$1,606	\$1,903	\$1,300	\$535
September	\$842	\$901	\$1,124	\$1,613	\$950	\$1,288	\$1,649	\$2,101	\$795	\$589
December	\$737	\$901	\$1,102	\$1,583	\$840	\$1,319	\$1,588	\$2,098	\$925	\$608
<b>2011</b>										
March ^	\$644	\$904	\$1,143	\$1,571	\$990	\$1,350	\$1,481	\$2,245	\$850	\$570
June	\$723	\$901	\$1,136	\$1,642	\$1,137	\$1,318	\$1,632	\$2,187	\$800	\$628
September	\$833	\$906	\$1,073	\$1,629	\$969	\$1,248	\$1,647	\$2,233	\$750	\$657
December	\$770	\$897	\$1,100	\$1,693	\$863	\$1,141	\$1,728	\$2,217	\$866	\$599
<b>2012</b>										
March	\$722	\$926	\$1,163	\$1,454	\$850	\$1,100	\$1,586	\$2,104	\$725	\$557
June	\$600	\$885	\$1,133	\$1,462	NA	\$1,268	\$1,664	\$1,720	\$881	\$595
September	\$951	\$908	\$1,185	\$1,901	\$950	\$1,433	\$1,775	\$2,140	\$1,000	\$661
December	\$905	\$927	\$1,155	\$1,861	\$900	\$1,381	\$1,650	\$2,107	NA	\$571
<b>2013</b>										
March	\$656	\$920	\$1,190	\$1,720	\$912	\$1,185	\$1,787	\$2,215	\$1,200	\$570
June	\$645	\$920	\$1,181	\$1,797	\$981	\$1,369	\$1,664	\$2,437	\$625	\$520
September	\$959	\$919	\$1,215	\$1,698	\$1,035	\$1,390	\$1,661	\$2,185	\$858	\$635
December	\$768	\$1,047	\$1,234	\$1,698	\$1,011	\$1,243	\$1,820	\$1,951	\$900	\$615
<b>2014</b>										
March	\$700	\$1,036	\$1,215	\$1,609	\$1,015	\$1,291	\$1,523	\$2,217	\$1,022	\$611
June	\$717	\$935	\$1,201	\$1,577	\$970	\$1,278	\$1,856	\$2,155	\$770	\$664
<b>% Change</b>										
<b>2013-14</b>	<b>11%</b>	<b>2%</b>	<b>2%</b>	<b>-12%</b>	<b>-1%</b>	<b>-7%</b>	<b>12%</b>	<b>-12%</b>	<b>23%</b>	<b>28%</b>
<b>Mar.</b>										

**SOURCE:** Community Research Center rental surveys, 2010-2014, including most major apartment complexes, *Fairbanks Daily News-Miner* advertisements, and <http://www.craigslist.com> during the week surrounding the 19th of March, June, September and December.

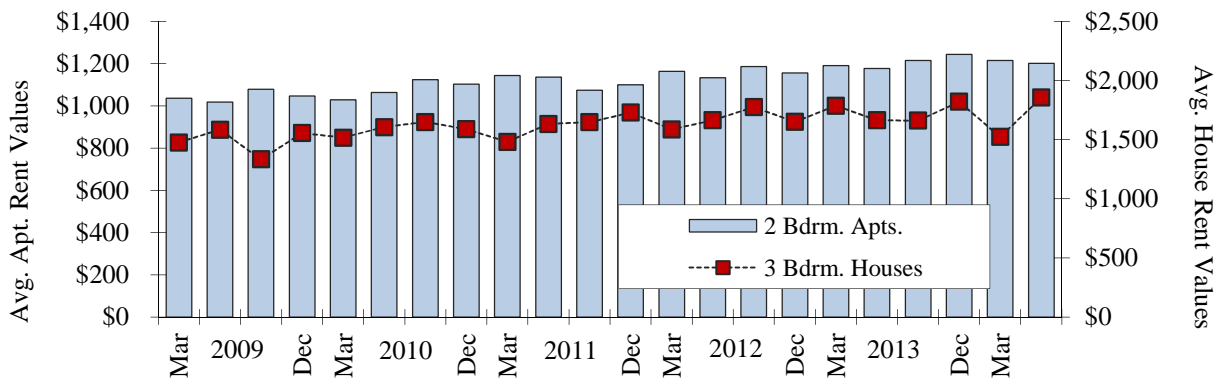
**NOTE:** Aging Fairview Manor demolished the last units in the fall 2011. Weeks Field Estates has replaced them with 130 affordable housing units in 2009-2011. Walden Estates, once off-base military housing, privatized and placed 150 units; 3-5 bdrms. on the market for sale or rent (27:duplexes; 23:4-plexes; 4:houses) in June 2010 (PHII). By September 2010 all units were under contract with none available for rent. B&B's come off in May & back on in September. See *Vacancy Rates* footer for military deployments.

NA Not available

^ Correction made to March 2011 data on June 24, 2011.

### AVERAGE MONTHLY RENTS FOR AVAILABLE HOUSING UNITS

Fairbanks North Star Borough  
2009-2014



## Housing

### RESIDENTIAL HOUSING SALES\*

Fairbanks North Star Borough  
2012-2014\*\*

Quarter	1 Bedroom		2 Bedroom		3 Bedroom		4 Bedroom		5+ Bedroom		Total # Sold	Avg.Price
	#	Price	#	Price	#	Price	#	Price	#	Price		
<b>2012</b>												
1st Qtr.	8	\$107,000	23	\$156,582	81	\$220,186	25	\$293,744	7	\$307,957	144	\$220,776
2nd Qtr.	11	\$108,668	26	\$162,511	95	\$233,418	30	\$276,064	2	\$192,500	164	\$221,111
3rd Qtr.	15	\$125,533	41	\$156,251	110	\$231,445	52	\$271,592	9	\$261,110	227	\$221,238
4th Qtr.	10	\$86,600	18	\$152,544	57	\$221,887	19	\$234,584	6	\$285,133	110	\$203,884
<b>2012 Total</b>	<b>44</b>	<b>\$109,099</b>	<b>108</b>	<b>\$157,211</b>	<b>343</b>	<b>\$227,744</b>	<b>126</b>	<b>\$271,471</b>	<b>24</b>	<b>\$275,062</b>	<b>645</b>	<b>\$218,143</b>
<b>2013</b>												
1st Qtr.	12	\$116,741	22	\$179,311	88	\$222,038	30	\$277,129	6	\$286,066	158	\$220,983
2nd Qtr.	9	\$81,666	26	\$167,436	93	\$229,575	34	\$301,022	9	\$252,544	171	\$227,757
3rd Qtr.	14	\$118,369	45	\$152,495	145	\$231,950	51	\$299,159	17	\$297,294	272	\$229,644
4th Qtr.	9	\$114,611	22	\$137,713	73	\$201,386	23	\$270,673	10	\$248,432	137	\$200,527
<b>2013 Total</b>	<b>44</b>	<b>\$109,649</b>	<b>115</b>	<b>\$158,175</b>	<b>399</b>	<b>\$223,618</b>	<b>138</b>	<b>\$290,081</b>	<b>42</b>	<b>\$274,467</b>	<b>738</b>	<b>\$221,947</b>
<b>2014</b>												
1st Qtr.	10	\$89,520	15	\$144,251	68	\$189,023	24	\$256,482	8	\$241,243	125	\$191,984
2nd Qtr.	12	\$92,285	48	\$170,202	129	\$221,507	60	\$266,812	11	\$309,090	260	\$220,232
<b>2014 Total</b>	<b>22</b>	<b>\$91,028</b>	<b>63</b>	<b>\$164,023</b>	<b>197</b>	<b>\$210,294</b>	<b>84</b>	<b>\$263,861</b>	<b>19</b>	<b>\$280,523</b>	<b>385</b>	<b>\$211,060</b>
<b>% Chg. 1st Qtr. 2013-14</b>	<b>33%</b>	<b>13%</b>	<b>85%</b>	<b>2%</b>	<b>39%</b>	<b>-4%</b>	<b>76%</b>	<b>-11%</b>	<b>22%</b>	<b>22%</b>	<b>52%</b>	<b>-3%</b>
<b>% Chg. ANNUAL 2012-13</b>	<b>0%</b>	<b>1%</b>	<b>6%</b>	<b>1%</b>	<b>16%</b>	<b>-2%</b>	<b>10%</b>	<b>7%</b>	<b>75%</b>	<b>0%</b>	<b>14%</b>	<b>2%</b>

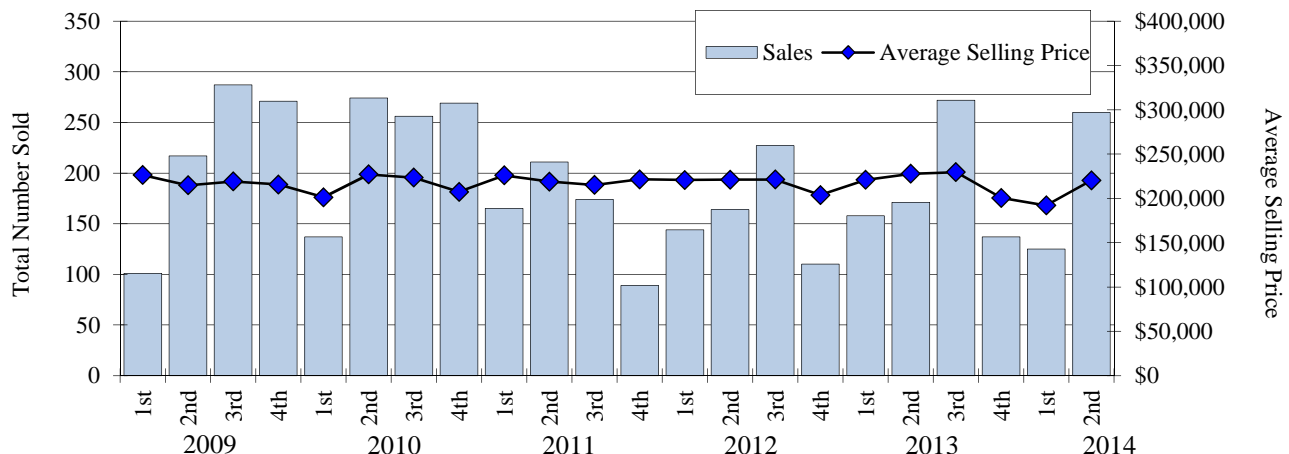
**SOURCE:** Greater Fairbanks Board of Realtors and Alaska/Multiple Listing Service, Inc., personal and computer printout communications 2012-2014. Fairbanks Area MLS District data maintained by the Board or its MLS may not reflect all real estate activity in the market, and neither the Board nor its MLS guarantees or is in any way responsible for accuracy of the data.

\* Does not include houses without bedrooms or sales of housing with zero lot lines.

\*\* The Year-End Total number of sales includes the calculated average price of sales.

### RESIDENTIAL HOUSING SALES

Fairbanks North Star Borough  
2009-2014, Quarterly Data



## Housing

### ANNUAL AVERAGE RESIDENTIAL HOUSING SALES\*

Fairbanks North Star Borough  
2000-2013

Year	1 Bedroom		2 Bedroom		3 Bedroom		4 Bedroom		5+ Bedroom		Total # Sold	Avg. Selling Price	% Chg fr prev yr	
	#	Price	#	Price	#	Price	#	Price	#	Price			Total # Sold	Avg. Price
2000	59	\$53,824	180	\$92,473	396	\$140,714	140	\$173,130	41	\$187,028	816	\$131,679	11.3%	2.7%
2001	61	\$63,591	233	\$94,299	432	\$150,035	162	\$176,423	47	\$188,765	935	\$137,025	14.6%	4.1%
2002	43	\$68,595	175	\$100,499	295	\$158,241	130	\$213,208	50	\$201,706	693	\$151,545	-25.9%	10.6%
2003	59	\$74,127	204	\$107,667	410	\$170,379	173	\$204,159	47	\$237,134	893	\$159,751	28.9%	5.4%
2004	65	\$93,531	164	\$120,336	441	\$178,733	147	\$214,663	39	\$240,959	856	\$170,080	-4.1%	6.5%
2005	55	\$95,452	160	\$135,749	439	\$207,847	163	\$244,873	38	\$266,373	855	\$196,785	-0.1%	15.7%
2006	64	\$107,793	158	\$148,952	554	\$220,860	194	\$262,791	46	\$288,256	1016	\$213,613	18.8%	8.6%
2007	58	\$107,211	176	\$170,842	541	\$228,359	194	\$271,421	41	\$288,301	1010	\$222,084	-0.6%	4.0%
2008	59	\$107,872	135	\$155,583	493	\$218,826	159	\$277,801	19	\$306,389	865	\$214,151	-14.4%	-3.6%
2009	46	\$109,055	154	\$161,362	465	\$224,245	171	\$264,285	40	\$287,474	876	\$217,845	1.3%	1.7%
2010	59	\$115,540	139	\$147,941	493	\$223,043	198	\$266,623	47	\$269,378	936	\$216,659	6.8%	-0.5%
2011	26	\$109,868	104	\$165,225	332	\$222,347	142	\$265,592	35	\$281,853	639	\$221,939	-31.7%	2.4%
2012	44	\$109,099	108	\$157,211	343	\$227,744	126	\$271,471	24	\$275,062	645	\$218,143	0.9%	-1.7%
2013	44	\$109,647	115	\$158,175	399	\$223,618	138	\$290,081	42	\$274,467	738	\$221,947	14.4%	1.7%
<b>Annual Average 2000-13</b>	<b>53</b>	<b>\$94,657</b>	<b>158</b>	<b>\$136,880</b>	<b>431</b>	<b>\$199,642</b>	<b>160</b>	<b>\$242,609</b>	<b>40</b>	<b>\$256,653</b>	<b>841</b>	<b>\$192,375</b>		

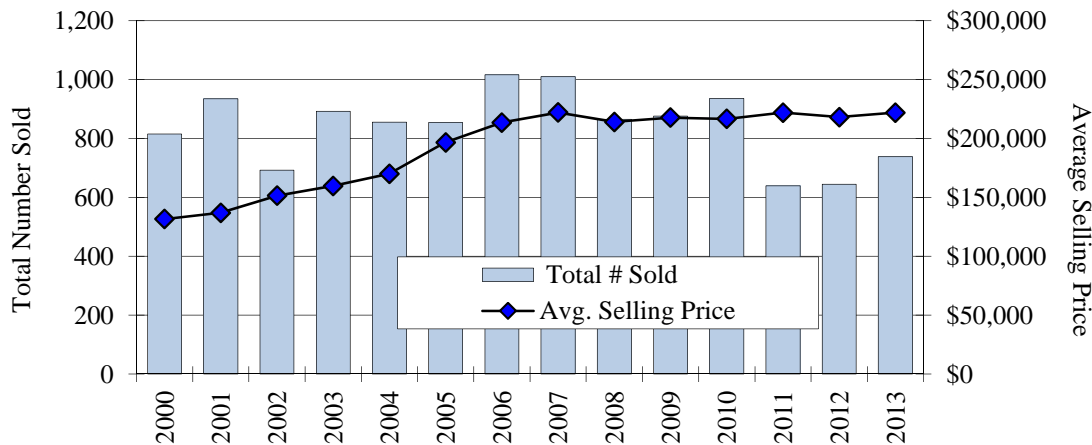
**SOURCE:** Greater Fairbanks Board of Realtors and Alaska/Multiple Listing Service, Inc., personal and computer printout communications 2000-2013. Fairbanks Area MLS District data maintained by the Board or its MLS may not reflect all real estate activity in the market, and neither the Board nor its MLS guarantees or is in any way responsible for accuracy of the data.

\* Does not include houses without bedrooms or housing with zero lot lines.

\*\* The Year-End Total number of sales includes the calculated average price of sales.

### ANNUAL RESIDENTIAL HOUSING SALES\*

Fairbanks North Star Borough  
2000-2013



## Housing

### NEW STRUCTURES BY UNIT ANNUAL REPORT\*

Fairbanks North Star Borough  
2003-2014\*

Year Built	City of Fairbanks	City of North Pole	Balance of Borough	New Construction (ALL)
2000	479	61	2	542
2001	561	29	7	597
2002	594	47	6	647
2003	80	10	704	794
2004	80	10	860	950
2005	65	50	825	940
2006	82	42	782	906
2007	83	39	707	829
2008	243	37	370	650
2009	154	11	396	561
2010	337	2	422	761
2011	95	11	674	780
2012	50	5	332	387
2013	37	5	250	292
2014 YTD	38	1	15	54
Average 2000-2013	199	24	423	646

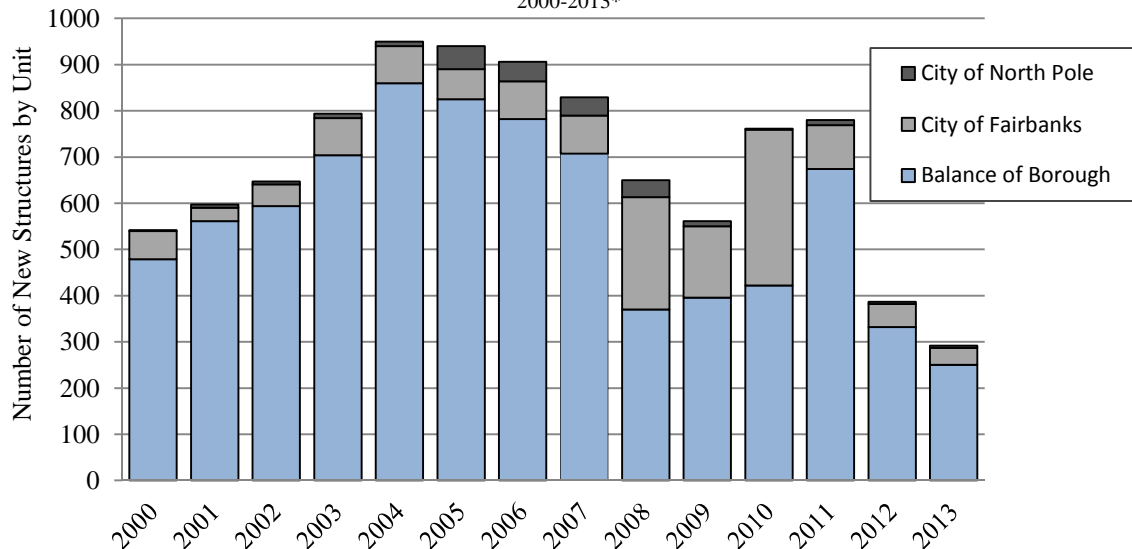
**SOURCE:** Fairbanks North Star Borough Assessing Department, personal communications, 2006-2014.

**NOTE:** Assessing figures are collected and updated daily but stabilize one quarter after calendar year close and prior to May certification date. The term Multi-family is indicative of structures having more than one residential unit, such as a duplex, triplex, 4-plex, etc. Structures with Mother-in-law apartments are not usually regarded as multi-family. Single Family Residential (SFR) abbreviated above. SFR includes condominiums, and townhouses. In some instances, cabins and mobile homes are viewed as SFR (however, cabins are not necessarily year-round residential units, and mobile homes are not always located on a lot with a foundation). The mobile home classification is typically considered transient stock (because they can easily be relocated). The *by Structure* count was replaced with a *"by unit"* count beginning February, 2010.

\* Current data supersedes previous figures reported and current year is YTD (year to date) data.

### NEW STRUCTURES BY UNIT

Fairbanks North Star Borough  
2000-2013\*



# COST OF LIVING

## C2ER COST OF LIVING INDEX\*

For Selected Cities  
First Quarter 2014

City	Composite Index 100%	Grocery		Utilities	Trans- portation	Health Care	Misc. Goods & Services
		Items 13.48%	Housing 26.05%				
<b>West:</b>							
<b>Fairbanks, AK</b>	<b>133.2</b>	<b>124.9</b>	<b>124.2</b>	<b>238.5</b>	<b>108.1</b>	<b>148.8</b>	<b>119.3</b>
Anchorage, AK	126.8	123.5	157.3	94.6	100.6	138.8	121.9
Kodiak, AK	136.5	146.3	153.6	160.1	122.2	141.2	116.6
Juneau, AK	132.2	127.4	162.4	147.3	103.3	149.6	114.3
Phoenix, AZ	97.2	99.9	91.9	99.5	100.6	100.1	97.8
San Diego, CA	133.5	106.8	201.3	106.3	118.8	116.3	107.3
Denver, CO	107.0	99.9	125.8	98.1	100.8	101.3	101.0
Boise, ID	95.4	94.0	88.2	88.4	102.0	107.9	99.5
Bozeman, MT	99.4	102.9	111.6	87.9	86.2	105.1	96.1
Rio Rancho, NM	92.1	94.6	77.4	89.5	100.9	98.8	99.0
Seattle, WA	127.5	112.9	169.4	98.4	116.9	117.4	114.6
Pierre, SD	102.4	110.0	115.1	90.1	90.6	95.4	98.4
<b>South:</b>							
Miami, FL	110.9	108.0	124.6	97.3	109.5	103.1	106.9
Atlanta, GA	100.2	104.3	96.6	89.5	102.0	103.2	103.3
Lafayette, LA	94.7	93.9	93.4	92.9	96.3	84.9	97.3
Springfield, MO	89.9	96.9	73.1	98.2	99.2	97.9	93.0
Tulsa, OK							
Memphis, TN	84.8	89.9	69.3	96.3	94.1	90.3	87.0
Dallas, TX	95.4	97.0	75.5	104.2	101.9	97.2	104.9
<b>North Central:</b>							
Indianapolis, IN	93.8	92.6	81.9	96.9	101.3	95.1	99.7
Grand Rapids, MI	92.0	94.7	76.4	94.1	100.9	93.1	99.0
Madison, WI	107.6	102.2	115.0	104.9	106.7	113.0	104.3
<b>Northeast:</b>							
New York, NY	217.0	143.0	432.6	141.1	124.4	112.3	150.3
Philadelphia, PA	119.1	114.4	135.4	124.1	106.4	101.1	114.2
Boston, MA	136.7	119.7	171.2	136.1	105.5	119.0	131.2
Raleigh, NC	93.4	104.0	76.7	100.8	100.2	104.5	95.8
Richmond, VA	100.2	103.6	89.0	104.8	97.5	105.5	106.4
Avg. of 279 Urban Areas	100.0	100.0	100.0	100.0	100.0	100.0	100.0

**SOURCE:** Council for Community and Economic Research (C2ER), *Cost of Living Index, Comparative Data for 279 Urban Areas*, Second Quarter 2014, August 2014.

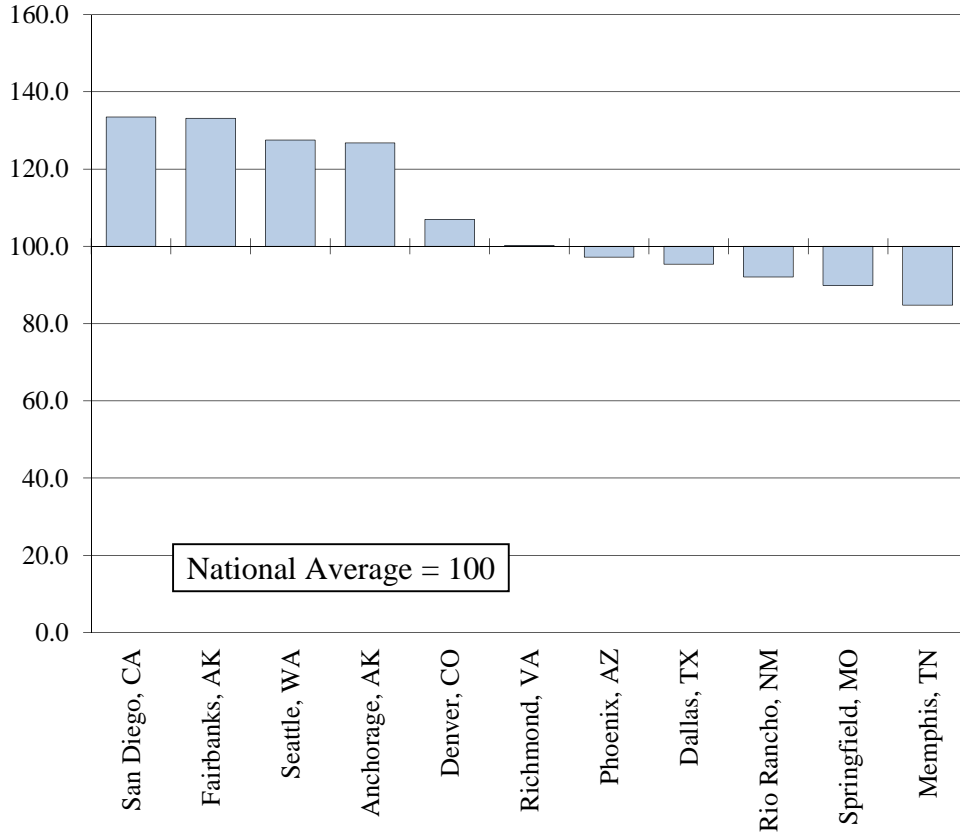
**NOTE:** This Cost of Living Index **does not measure inflation** (price change over time). Because each quarterly report is a separate comparison of prices at a single point in time, and because both the number and the mix of participants changes from one quarter to the next, **Index data from different quarters cannot be compared.** **The Index reflects cost differentials for professional and executive households in the top income quintile.** For inflation data contact the US Bureau of Labor Statistics (BLS) at [www.bls.gov](http://www.bls.gov).

\* Item percentages change so please watch for current percentages.

## Cost of Living

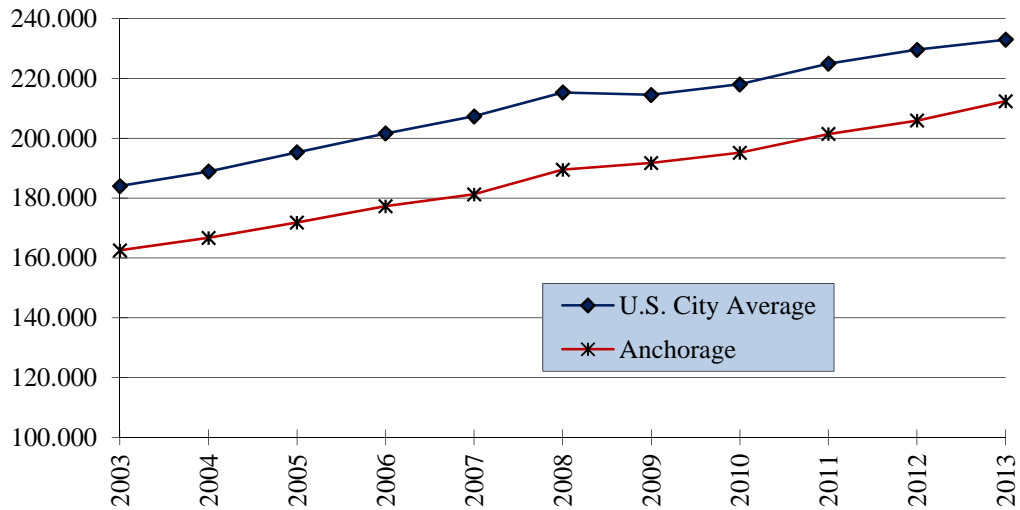
### C2ER COST OF LIVING INDEX

For Selected Cities  
Second Quarter 2014



### CONSUMER PRICE INDEX-U FOR ALL ITEMS

Anchorage & U.S. City Annual Average  
2003-2013





## Cost of Living

### CONSUMER PRICE INDEX-U\*^

Anchorage, Alaska  
2009-2014

	2009	2010	2011	2012	2013	2014	% Change 2013-14
Jan. - June Average	190.032	194.834	200.278	205.215	210.853	214.777	1.9%
July - Dec. Average	193.456	195.455	202.576	206.617	213.910		
<b>Annual Average</b>	<b>191.744</b>	<b>195.144</b>	<b>201.427</b>	<b>205.916</b>	<b>212.381</b>		
<b>% Change from Previous Year</b>	<b>1.2%</b>	<b>1.8%</b>	<b>3.2%</b>	<b>2.2%</b>	<b>3.1%</b>		

**SOURCE:** U.S. Department of Labor, Bureau of Labor Statistics, *Consumer Price Indexes Pacific Cities and U.S. City Average*, not seasonally adjusted, 2009-2014.

**NOTE:** 1982-1984 = 100

\* For All Urban Consumers.

### CONSUMER PRICE INDEX-U\* FOR ALL ITEMS

U.S. City Average  
2009-2014

	2009	2010	2011	2012	2013	2014	% Change 2013-14
January	211.143	216.687	220.223	226.665	230.280	233.916	1.6%
February	212.193	216.741	221.309	227.663	232.166	234.781	1.1%
March	212.709	217.631	223.467	229.392	232.773	236.293	1.5%
April	213.240	218.009	224.906	230.085	232.531	237.072	2.0%
May	213.856	218.178	225.964	229.815	232.945	237.900	2.1%
June	215.693	217.965	225.722	229.478	233.504	238.343	2.1%
July	215.351	218.011	225.922	229.104	233.596		
August	215.834	218.312	226.545	230.379	233.877		
September	215.969	218.439	226.889	231.407	234.149		
October	216.177	218.711	226.421	231.317	233.546		
November	216.330	218.803	226.230	230.221	233.069		
December	215.949	219.179	225.672	229.601	233.049		
<b>Annual Average</b>	<b>214.537</b>	<b>218.056</b>	<b>224.939</b>	<b>229.594</b>	<b>232.957</b>		
<b>% Change from Previous Year</b>	<b>-0.4%</b>	<b>1.6%</b>	<b>3.2%</b>	<b>2.1%</b>	<b>1.5%</b>		

**SOURCE:** U.S. Department of Labor, Bureau of Labor Statistics, *Consumer Price Indexes Pacific Cities and U.S. City Average*, not seasonally adjusted, 2009-2014.

**NOTE:** 1982-1984=100; All items. 3rd Qtr. 2013 - federal government shutdown pushed back the release dates for data.

\* For All Urban Consumers.

## Cost of Living

### CONSUMER PRICE INDEX FOR ALL URBAN CONSUMERS

Anchorage  
2010-2013

Index Item	Relative Importance (Percent of All Items) Dec. 2013	-----Indexes-----				% Change 2010-13	% Change 2012-13
		2010	2011	2012	2013		
<b>Food &amp; Beverage</b>	<b>15.835</b>	<b>191.4</b>	<b>198.3</b>	<b>203.090</b>	<b>203.901</b>	<b>6.5%</b>	<b>0.4%</b>
Food	14.630	194.7	202.8	208.590	209.419	7.5%	0.4%
Food at Home	8.804	196.7	205.6	210.532	211.026	7.3%	0.2%
Food away from home	5.826	191.0	198.3	204.939	205.727	7.7%	0.4%
Alcoholic beverages	1.205	153.3	151.5	147.538	148.161	-3.3%	0.4%
<b>Housing</b>	<b>41.775</b>	<b>175.2</b>	<b>180.4</b>	<b>185.222</b>	<b>190.906</b>	<b>8.9%</b>	<b>3.1%</b>
Shelter	33.096	177.2	182.2	188.072	194.446	9.8%	3.4%
Rent of primary residence <sup>6</sup>	4.908	172.4	178.2	184.050	191.331	11.0%	4.0%
Owners' equivalent rent of primary residence <sup>6,7</sup>	27.227	177.8	182.9	189.232	195.593	10.0%	3.4%
Fuels and utilities	4.232	247.7	256.2	257.464	260.916	5.3%	1.3%
Household Energy	3.401	255.3	264.4	262.016	263.447	3.2%	0.5%
Household furnishings and operations	4.446	121.5	126.2	126.595	129.058	6.3%	1.9%
<b>Apparel</b>	<b>3.677</b>	<b>139.7</b>	<b>142.8</b>	<b>149.049</b>	<b>156.144</b>	<b>11.8%</b>	<b>4.8%</b>
<b>Transportation</b>	<b>17.446</b>	<b>198.6</b>	<b>207.9</b>	<b>212.114</b>	<b>226.960</b>	<b>14.3%</b>	<b>7.0%</b>
Private transportation	15.463	195.8	207.3	210.992	229.470	17.2%	8.8%
Motor fuel	5.014	274.8	318.3	325.765	310.181	12.9%	-4.8%
<b>Medical Care</b>	<b>6.608</b>	<b>419.7</b>	<b>442.0</b>	<b>461.269</b>	<b>476.050</b>	<b>13.4%</b>	<b>3.2%</b>
<b>Education and communication<sup>10</sup></b>	<b>4.740</b>	<b>111.5</b>	<b>111.0</b>	<b>110.062</b>	<b>112.998</b>	<b>1.3%</b>	<b>2.7%</b>
<b>Recreation<sup>10</sup></b>	<b>7.005</b>	<b>119.6</b>	<b>120.8</b>	<b>119.845</b>	<b>120.217</b>	<b>0.5%</b>	<b>0.3%</b>
<b>Other Goods &amp; Services</b>	<b>2.915</b>	<b>305.3</b>	<b>320.1</b>	<b>326.360</b>	<b>328.125</b>	<b>7.5%</b>	<b>0.5%</b>
<b>All Items</b>	<b>100.000</b>	<b>195.1</b>	<b>201.4</b>	<b>205.916</b>	<b>212.381</b>	<b>8.8%</b>	<b>3.1%</b>
<b>All Items Less Shelter</b>	<b>66.904</b>	<b>202.2</b>	<b>209.2</b>	<b>212.802</b>	<b>219.166</b>	<b>8.4%</b>	<b>3.0%</b>

**SOURCE:** U.S. Department of Labor, Bureau of Labor Statistics (BLS), *CPI Detailed Report*, BLS website: <http://www.bls.gov>, 2014.

**NOTE:** (1982-84=100, unless otherwise noted).

<sup>6</sup> This index series was calculated using Laspeyres estimator. All other item stratum index series were calculated using a geometric means estimator.

<sup>7</sup> Indexes are on a November 1982=100 base in Anchorage.

<sup>10</sup> Indexes on a December 1997=100 base.

## Cost of Living

### CONSUMER PRICE INDEX FOR ALL URBAN CONSUMERS

United States City Average  
2010-2013

Index Item	Relative Importance (Percent of All Items) Dec. 2013	-----Indexes-----				% Change 2010-13	% Change 2012-13
		2010	2011	2012	2013		
<b>Food &amp; Beverage</b>	<b>14.901</b>	<b>220.0</b>	<b>227.866</b>	<b>233.670</b>	<b>236.966</b>	<b>7.7%</b>	<b>1.4%</b>
Food	13.891	219.6	227.842	233.777	237.037	7.9%	1.4%
Food at Home	8.187	215.8	226.201	231.774	233.869	8.4%	0.9%
Food away from home	5.704	226.1	231.401	237.986	243.068	7.5%	2.1%
Alcoholic beverages	1.010	223.3	226.685	230.800	234.623	5.1%	1.7%
<b>Housing</b>	<b>41.448</b>	<b>216.3</b>	<b>219.102</b>	<b>222.715</b>	<b>227.351</b>	<b>5.1%</b>	<b>2.1%</b>
Shelter	32.029	248.4	251.646	257.083	263.056	5.9%	2.3%
Rent of primary residence <sup>2</sup>	6.977	249.4	253.638	260.367	267.725	7.4%	2.8%
Owners' equivalent rent of primary residence <sup>2 3</sup>	23.900	256.6	259.553	264.838	270.661	5.5%	2.2%
Fuels and utilities	5.158	214.2	220.367	218.986	225.207	5.1%	2.8%
Household Energy	3.980	189.3	193.648	189.308	193.840	2.4%	2.4%
Household furnishings and operations	4.262	125.5	124.943	125.749	124.765	-0.6%	-0.8%
<b>Apparel</b>	<b>3.437</b>	<b>119.5</b>	<b>122.111</b>	<b>126.265</b>	<b>127.411</b>	<b>6.6%</b>	<b>0.9%</b>
<b>Transportation</b>	<b>16.418</b>	<b>193.4</b>	<b>212.366</b>	<b>217.337</b>	<b>217.412</b>	<b>12.4%</b>	<b>0.0%</b>
Private transportation	15.254	188.7	207.641	212.752	212.399	12.5%	-0.2%
Motor fuel	5.065	239.2	302.619	312.660	303.850	27.0%	-2.8%
Public Transportation	1.164	251.4	269.403	271.351	278.851	10.9%	2.8%
<b>Medical Care</b>	<b>7.551</b>	<b>388.4</b>	<b>400.258</b>	<b>414.924</b>	<b>425.134</b>	<b>9.4%</b>	<b>2.5%</b>
<b>Education and communication<sup>1</sup></b>	<b>7.087</b>	<b>129.9</b>	<b>131.466</b>	<b>133.844</b>	<b>135.866</b>	<b>4.6%</b>	<b>1.5%</b>
<b>Recreation<sup>1</sup></b>	<b>5.793</b>	<b>113.3</b>	<b>113.357</b>	<b>114.703</b>	<b>115.266</b>	<b>1.7%</b>	<b>0.5%</b>
<b>Other Goods &amp; Services</b>	<b>3.365</b>	<b>381.3</b>	<b>387.224</b>	<b>394.395</b>	<b>401.002</b>	<b>5.2%</b>	<b>1.7%</b>
<b>All Items</b>	<b>100.000</b>	<b>218.1</b>	<b>224.939</b>	<b>229.594</b>	<b>232.957</b>	<b>6.8%</b>	<b>1.5%</b>
<b>All Items Less Shelter</b>	<b>67.971</b>	<b>208.6</b>	<b>217.048</b>	<b>221.446</b>	<b>223.820</b>	<b>7.3%</b>	<b>1.1%</b>

**SOURCE:** U.S. Department of Labor, Bureau of Labor Statistics (BLS), *CPI Detailed Report*, BLS website: <http://www.bls.gov>, 2014.

**NOTE:** (1982-84=100, unless otherwise noted). The relative importances for the US city average was reported on January 2014.

<sup>1</sup> Indexes on a December 1997=100 base.

<sup>2</sup> This index series was calculated using a Laspeyres estimator. All other item stratum index series were calculated using a geometric means estimator.

<sup>3</sup> Indexes on a December 1982=100 bases.

Cost of Living

**COST OF FOOD AT HOME FOR A WEEK**

Selected Alaskan Communities

March 2014

	Anchorage	Cordova	Delta	<b>Fairbanks</b>	Kenai	Matsu	Valdez
Family of 2							
19-50 years	\$101.02	\$155.49	\$121.43	<b>\$101.94</b>	\$109.07	\$101.49	\$138.32
51-70 years	\$95.68	\$147.28	\$115.01	<b>\$96.56</b>	\$103.31	\$96.13	\$131.02
Family of 4 with:							
Children, 2-5 years	\$146.99	\$226.24	\$178.68	<b>\$148.33</b>	\$158.70	\$147.67	\$201.27
Children, 6-11 years	\$168.44	\$259.26	\$202.47	<b>\$169.98</b>	\$181.86	\$169.22	\$230.64
Individuals							
Children:							
1 years	\$24.63	\$37.91	\$29.61	<b>\$24.86</b>	\$26.56	\$24.74	\$33.73
2-3 years	\$26.90	\$41.40	\$32.34	<b>\$27.15</b>	\$29.04	\$27.03	\$36.83
4-5 years	\$28.26	\$43.50	\$33.97	<b>\$28.52</b>	\$30.51	\$28.39	\$38.70
6-8 years	\$35.98	\$55.38	\$43.25	<b>\$36.31</b>	\$38.85	\$36.15	\$49.27
9-11 years	\$40.63	\$62.54	\$48.84	<b>\$41.01</b>	\$43.87	\$40.82	\$55.64
Males:							
12-13 years	\$43.70	\$67.26	\$52.53	<b>\$44.10</b>	\$47.18	\$43.90	\$59.84
14-18 years	\$45.06	\$69.36	\$54.16	<b>\$45.47</b>	\$48.65	\$45.27	\$61.70
19-50 years	\$48.58	\$74.77	\$58.39	<b>\$49.02</b>	\$52.45	\$48.80	\$66.52
51-70 years	\$44.27	\$68.13	\$53.21	<b>\$44.67</b>	\$47.79	\$44.47	\$60.61
71+ years	\$44.72	\$68.83	\$53.76	<b>\$45.13</b>	\$48.28	\$44.93	\$61.23
Females:							
12-13 years	\$43.81	\$67.44	\$52.66	<b>\$44.21</b>	\$47.30	\$44.02	\$59.99
14-18 years	\$43.02	\$66.21	\$51.71	<b>\$43.41</b>	\$46.45	\$43.22	\$58.90
19-50 years	\$43.25	\$66.56	\$51.98	<b>\$43.64</b>	\$46.69	\$43.45	\$59.21
51-70 years	\$42.68	\$65.69	\$51.30	<b>\$43.07</b>	\$46.08	\$42.88	\$58.44
71+ years	\$41.43	\$63.77	\$49.80	<b>\$41.81</b>	\$44.73	\$41.62	\$56.73

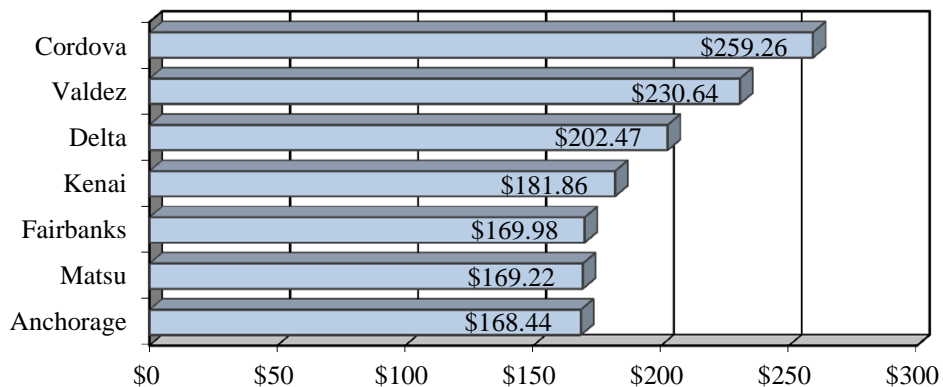
**SOURCE:** Alaska Cooperative Extension Service, UAF, "Cost of Food at Home for a Week," March 2014.

**NOTE:** There will be a 6 month lag in this report due to press timelines.

**COST OF FOOD AT HOME FOR A WEEK  
FAMILY OF 4 WITH CHILDREN AGE 6-11 YEARS**

Selected Alaskan Communities

March 2014



## Cost of Living

### AVERAGE SELF-SERVICE UNLEADED GASOLINE PRICES\*

Fairbanks North Star Borough  
2009-2014

	2009	2010	2011	2012	2013	2014	% chg 2013-14
January	\$2.539	\$3.279	\$3.629	\$3.919	\$3.779	\$3.649	-3.4%
February	\$2.599	\$3.349	\$3.699	\$3.999	\$3.939	\$3.679	-6.6%
March	\$2.559	\$3.349	\$3.919	\$4.309	\$4.179	\$3.799	-9.1%
April	\$2.559	\$3.499	\$4.109	\$4.449	\$4.169	\$3.919	-6.0%
May	\$2.679	\$3.499	\$4.229	\$4.579	\$4.169	\$3.999	-4.1%
June	\$2.859	\$3.499	\$4.179	\$4.369	\$4.189	\$4.179	-0.2%
July	\$3.159	\$3.529	\$4.039	\$4.049	\$4.159		
August	\$3.299	\$3.529	\$3.919	\$3.989	\$4.069		
September	\$3.349	\$3.529	\$3.919	\$4.069	\$3.999		
October	\$3.479	\$3.529	\$4.019	\$4.209	\$3.889		
November	\$3.369	\$3.559	\$4.059	\$4.019	\$3.769		
December	\$3.329	\$3.559	\$3.979	\$3.829	\$3.719		
Annual Average	\$2.982	\$3.476	\$3.975	\$4.149	\$4.002		

**SOURCE:** Community Research Center gasoline price survey and personal communications with Totem Chevron on Gaffney Road in Fairbanks, Alaska, 2009-2014.

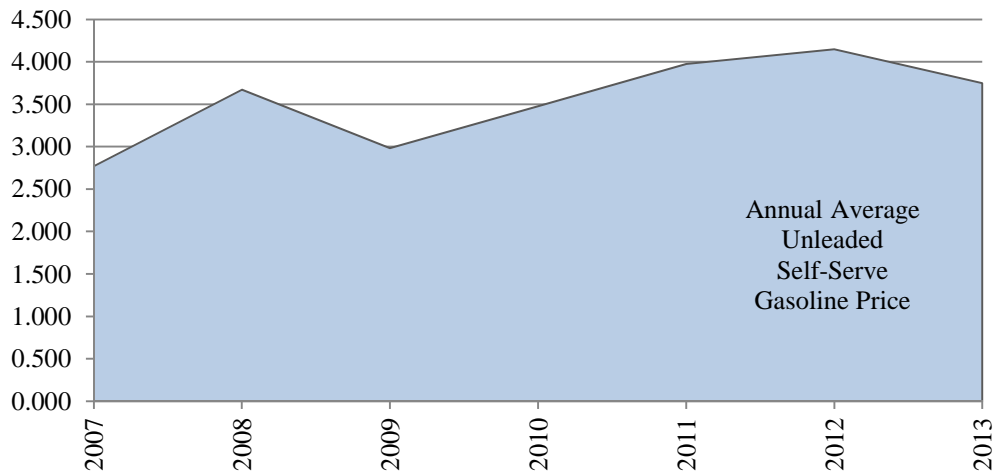
**NOTE:** Figures reflect prices at the self-serve pump for unleaded gasoline. Price is a monthly average of full months business. Only national gasoline retail chain outlets are surveyed.

Factors that may influence the price fluctuations include seasonality in the demand for gasoline, changes in the cost of crude oil, product supply/demand imbalances, proximity of supply, supply disruptions, competition in the local market, environmental programs, operating costs, and World oil supply/demand. Recent examples include the natural disaster named Hurricane Katrina (August 2005) which took out 25% of the US Crude oil production and 15% of the US refinery capacity. Some major pipelines were impacted by either shutdowns or reduced operating rates. The Deep Water Horizon Oil Spill in the Gulf of Mexico (April 2010). Other factors are political unrest such as the riots in the Middle East including Egypt, and Libya (January-April 2011). It is known that retail prices are likely to remain elevated as long as some refineries remain shut down and the U.S. gasoline market continues to stretch supplies to their limit.

\* Beginning December 2010 this survey changed to monthly reporting.

### ANNUAL AVERAGE SELF-SERVICE UNLEADED GASOLINE PRICES

Fairbanks North Star Borough  
2007-2013



# POPULATION & SOCIAL CONDITIONS

## POPULATION COUNTS & ESTIMATES\*\* Fairbanks, North Pole and the Fairbanks North Star Borough 2003-2013, Selected Years

			U.S. Census Bureau (1)	Ak. Department of Labor (2)*	Ak. Dept of Commerce (3)
<b>F A I R B A N K S</b>	2003	*	30,469	29,156	29,156
	2004	*	30,839	30,402	30,402
	2005	*	30,946	31,478	31,478
	2006	*	30,636	30,580	30,580
	2007	*	31,184	32,266	32,266
	2008	*	31,212	31,694	31,694
	2009	*	31,083	32,346	32,346
	2010	^	31,535	31,535	31,535
	2011	^	32,012	30,621	30,621
	2012	^	32,254	32,033	32,033
	2013	^	32,324	32,204	32,204
<b>N O R T H P O L E</b>	2003	*	1,728	1,617	1,617
	2004	*	1,796	1,548	1,548
	2005	*	1,848	1,624	1,624
	2006	*	1,873	1,675	1,675
	2007	*	1,967	2,013	2,013
	2008	*	2,008	2,233	2,233
	2009	*	2,045	2,199	2,199
	2010	^	2,117	2,117	2,117
	2011	^	2,172	2,104	2,104
	2012	^	2,205	2,158	2,158
	2013	^	2,214	2,209	2,209
<b>F N S B</b>	2003	*	86,885	83,714	84,979
	2004	*	89,043	87,555	87,608
	2005	*	90,431	90,381	96,888
	2006	*	90,545	90,953	96,888
	2007	*	93,545	95,354	97,970
	2008	*	94,552	96,423	98,660
	2009	*	95,238	96,631	97,581
	2010	^	98,190	97,581	97,581
	2011	^	99,276	97,909	97,909
	2012	^	100,141	100,320	100,320
	2013	^	100,436	99,632	99,632

**SOURCE:** (1) U.S. Census Bureau, Population Division, July 1st estimates. 2013 Population Estimates. PEPANNRES Table: *Annual Estimates of the Resident Population for Counties of Alaska: April 1, 2010 to July 1, 2013*, also Table: *Annual Estimates of the Resident Population in Alaska: now known as \*Intercensal Estimates of the Resident Population for Incorporated Places and Minor Civil Divisions: April 1, 2000 to July 1, 2013*, May 2014. Geographic change notes defined at: <http://www.census.gov>.

(2) Alaska Department of Labor and Workforce Development, Research and Analysis Section; and US Census Bureau. *Alaska Population Estimates by Borough, Census Area, City and Census Designated Place (CDP), 2010-2013*, Vintage 2013 ^, and *Alaska Population Estimates by Borough, Census Area, City and Census Designated Place (CDP), 2010-2013*, Vintage 2013 ^. All numbers are based on 2010 Census geography. ADOL website: <http://laborstats.alaska.gov>, February 2014.

(3) Alaska Department of Commerce, Community and Economic Development (DCCED), Division of Community and Regional Affairs, 2013 Commissioner Certified Estimates, January 15, 2013. DCCED Certified numbers may vary from ADOL population estimates as a result of the Population Estimate Appeal process available to incorporated communities on a yearly basis, as well as annual revisions by ADOL. Once certified, DCCED numbers may be applied for two consecutive calendar years. DCCED website: [http://www.commerce.state.ak.us/dca/commdb/CF\\_COMDB.htm](http://www.commerce.state.ak.us/dca/commdb/CF_COMDB.htm).

**NOTE:** The FNSB numbers include population for all communities within the Borough plus Fort Wainwright Army Base and Eielson Air Force Base.

\*\* U.S. Census and ADOL estimated numbers may be revised annually.

## Population and Social Conditions

### MILITARY POPULATION

Ft. Wainwright Army Base\*<sup>^</sup>

By Federal Fiscal Year Quarter: 2011-14

Ft. Wainwright Army Base	FFY Qtr.	FFY Months	Military Active Duty Personnel	Military Families	Total	% Change (same Qtr.) fr/prev/yr
2011	1	Oct-Dec	6,996	8,517	15,513	5.1%
	2	Jan-Mar	7,358	8,858	16,216	17.7%
	3	Apr-Jun	7,549	9,097	16,646	12.1%
	4	Jul-Sept	7,736	9,097	16,833	14.2%
2012	1	Oct-Dec	7,453	9,097	16,550	6.7%
	2	Jan-Mar	7,278	9,009	16,287	0.4%
	3	Apr-Jun	6,379	10,152	16,531	-0.7%
	4	Jul-Sept	6,441	9,998	16,439	-2.3%
2013	1	Oct-Dec	6,132	9,157	15,289	-7.6%
	2	Jan-Mar	6,164	8,863	15,027	-7.7%
	3	Apr-Jun	6,568	9,082	15,650	-5.3%
	4	Jul-Sept	6,475	9,038	15,513	-5.6%
2014	1	Oct-Dec	6,142	8,628	14,770	-3.4%
	2	Jan-Mar	5,895	8,299	14,194	-5.5%
	3	Apr-Jun	5,905	8,354	14,259	-8.9%

**SOURCE:** Fort Wainwright Army Base (FWA), Plans, Analysis and Integration Office (PAIO), and ALCOM, Alaskan Command, 2011-2014.

**NOTE:** Using Federal Fiscal Year (FFY) reporting periods: FFY1Q: Oct-Dec; FFY2Q: Jan-Mar; FFY3Q: Apr-Jun; FFY4Q: Jul-Sept. 3rd Qtr. 2013 - federal government shutdown pushed back the release dates for data.

<sup>^</sup> Prior to deployment a build up of replacements occurs.

\* Does not include contract civilian positions or BLM.

### MILITARY POPULATION

Eielson Air Force Base\*

By Federal Fiscal Year Quarter: 2011-2014

Eielson Air Force Base	FFY Qtr.	FFY Months	Military Active Duty Personnel	Military Families	Total	% Change (same Qtr.) fr/prev/yr
2011	1	Oct-Dec	1,909	2,974	4,883	-1.1%
	2	Jan-Mar	1,912	2,998	4,910	-0.2%
	3	Apr-Jun	1,914	3,022	4,936	-2.2%
	4	Jul-Sept	1,887	2,954	4,841	0.5%
2012	1	Oct-Dec	1,893	2,953	4,846	-0.8%
	2	Jan-Mar	1,893	2,953	4,846	-1.3%
	3	Apr-Jun	1,918	2,939	4,857	-1.6%
	4	Jul-Sept	1,931	2,866	4,797	-0.9%
2013	1	Oct-Dec	1,900	2,846	4,746	-2.1%
	2	Jan-Mar	1,873	2,832	4,705	-2.9%
	3	Apr-Jun	1,883	2,900	4,783	-1.5%
	4	Jul-Sept	1,866	2,840	4,706	-1.9%
2014	1	Oct-Dec	1,862	2,815	4,677	-1.5%
	2	Jan-Mar	1,876	2,799	4,675	-0.6%
	3	Apr-Jun	1,874	2,830	4,704	-1.7%

**SOURCE:** ALCOM, Alaskan Command, 2011-2014.

**NOTE:** Using Federal Fiscal Year (FFY) reporting periods: FFY1Q: Oct-Dec; FFY2Q: Jan-Mar; FFY3Q: Apr-Jun; FFY4Q: Jul-Sept. 3rd Qtr. 2013 - federal government shutdown pushed back the release dates for data.

\* Does not include contract civilian positions or BLM.

Population and Social Conditions

**MILITARY RETIREE<sup>1</sup> & GREY AREA RESERVIST/RETIREE<sup>2</sup> POPULATION\***

Fairbanks North Star Borough  
Annual Reporting in June  
2008-2013

Branch	2008	2009	2010	2011	2012	2013	% Chg. 2012-13
-----Retiree <sup>1</sup> -----							
Air Force	881	925	990	985	970	966	-0.4%
Army	705	739	818	822	843	943	11.9%
Coast Guard	12	12	11	13	14	12	-14.3%
Marine Corps	18	19	19	20	20	23	15.0%
Navy	57	60	61	64	61	62	1.6%
<b>Subtotal<sup>1</sup></b>	<b>1,673</b>	<b>1,755</b>	<b>1,899</b>	<b>1,904</b>	<b>1,908</b>	<b>2,006</b>	<b>5.1%</b>
-----Grey Area Reservist/Retiree <sup>2</sup> -----							
Air Force	87	94	107	113	115	123	7.0%
Army	52	52	52	54	56	65	16.1%
Coast Guard	0	0	0	0	0	0	-
Marine Corps	1	1	1	1	1	1	0.0%
Navy	3	3	3	3	2	1	-50.0%
<b>Subtotal<sup>2</sup></b>	<b>143</b>	<b>150</b>	<b>163</b>	<b>171</b>	<b>174</b>	<b>190</b>	<b>9.2%</b>
<b>TOTAL<sup>1 2</sup></b>	<b>1,816</b>	<b>1,905</b>	<b>2,062</b>	<b>2,075</b>	<b>2,082</b>	<b>2,196</b>	<b>5.5%</b>

**SOURCE:** US Army Transition Services Manager, Retirement Services Officer, Ft. Wainwright Army Base, August 2014.

**NOTE:** The data is researched by the FNSB zipcodes and reported collectively by the military branch.

<sup>1</sup>**Retiree:** Any military individual who is retired from military service for length of service (20 or more years) or an individual who is retired due to a medical disability and who is receiving military retired pay.

<sup>2</sup>**Grey Area Reservist/Retiree:** An individual retired from a Guard or Reserve unit but is not yet receiving military retired pay, will not receive pay until age 60.

\* Data are preliminary and subject to revision.

**MILITARY SURVIVOR/ANNUITANT<sup>3</sup> POPULATION\***

Fairbanks North Star Borough  
Annual Reporting in June  
2007-2012

Branch	2008	2009	2010	2011	2012	2013	% Chg. 2012-13
Survivor/Annuitant <sup>3</sup>	76	79	89	91	107	105	-1.9%
Survivor/Non-Annuitant <sup>4</sup>	-	-	-	-	-	138	-

**SOURCE:** US Army Transition Services Manager, Retirement Services Officer, Ft. Wainwright Army Base, August 2014.

**NOTE:** The data is researched by the FNSB zipcodes and reported collectively by the military branch.

<sup>3</sup>**Survivor/Annuitant:** A surviving family member of a deceased active duty individual or a retiree, who is receiving annuity payments based on the military members retired pay. Survivor/Annuitant are not broken down by branch of service.

<sup>4</sup>**Survivor/Non-Annuitant:** A surviving family member of a deceased active duty individual or a retiree, who is not receiving annuity payments based on the military members retired pay. Survivor/Non-Annuitant are not broken down by branch of service.



## Population and Social Conditions

### REGULATED CHILD CARE

Fairbanks North Star Borough  
Child Care Available  
Month of March: 2006-2013

Month of March/Year	Licensed*						Total Available	
	Homes		Group Homes		Centers		by Year	
	Facilities	Capacity	Facilities	Capacity	Facilities	Capacity	Facilities	Capacity
2006	60	427	22	263	30	1,834	112	2,524
2007	60	429	22	262	30	1,834	112	2,525
2008	43	322	31	366	26	1,453	100	2,141
2009	36	272	33	392	26	1,427	95	2,091
2010	28	214	31	368	30	1,465	89	2,047
2011	27	216	29	344	28	1,359	84	1,919
2012	24	192	23	288	29	1,372	76	1,852
2013	29	160	31	367	29	1,682	89	2,209

**SOURCE:** Licensed Facilities data compiled by the State of Alaska, Dept. of Health and Social Services, Child Care Licensing, Northern Regional Office, and "thread" Resource and Referral Family Services, August 2014.

**NOTES:** Table does not include child care facilities on military bases.

Facility Type:

\*Licensed:

Home - Usually in a private residence, can care for up to 8 children at any one time.

Group Home - Can be in a private residence or other facility, can care for 9 to 12 children at any one time.

Center - A facility where care is provided to 13 or more children at any one time.

### EDUCATION\*

Fairbanks North Star Borough School District  
Fiscal Year 2007-2008 to 2012-2013

By Grade	FY07-08	FY08-09	FY09-10	FY10-11	FY11-12	FY12-13	% Chg Previous FY
<b>GENERAL (Public Schools)</b>							
Number of Public Schools	34	34	35	35	35	35	0.0%
Average daily membership	14,083	14,148	14,553	14,238	14,277	14,308	0.2%
Student/Teacher ratio	17.1	17.6	16.7	17.6	17.7	17.2	-2.8%
Attendance rate	92.7	89.6	92.5	92.8	92.1	92.3	0.2%
Number of dropouts (7-12)	318	383	300	252	276	244	-11.6%
% of student dropouts (7-12)	4.8%	5.9%	4.7%	4.1%	4.4%	3.9%	-10.5%
# of high school graduates	826	876	889	836	788	817	3.7%
Graduation rate	55.7%	70.1%	70.2%	71.2%	70.2%	74.0%	5.3%

**SOURCE:** United Way of the Tanana Valley, COMPASS II Project, Community Needs Assessment 2008, <http://www.unitedwaytv.com>; and Fairbanks North Star Borough School District, <http://www.k12northstar.org/departments/research/public-reports>, 2013 and Alaska Department of Education and Early Development, State Report Cards: Statistics & Reports, <http://www.eed.state.ak.us/stats/>.

**NOTE:** **The Dropout Rate** is computed by dividing the number of dropouts in the current school year by the number of students enrolled in grades 7-12 on October 1 of the current school year. School year is defined as the 12-month period beginning with July 1 and ending June 30. A **Dropout** is defined as a student who was enrolled in the district at some time during the school year and whose enrollment terminated. *This does not include* an individual who: graduated from high school or completed a state or district approved education program, as evidenced by receipt of formal recognition from school authorities; transferred to another public school, private school or state or district approved education program; is temporarily absent due to suspension; is absent due to illness or medical condition; or died. ADM is average daily membership (student headcount).

\* Numbers may be subject to revision.

## Population and Social Conditions

### CRIMINAL OFFENSE SUMMARY

Fairbanks and North Pole Police Departments and Detachment D of the Alaska State Troopers  
2008-2012

Yr	Category	Criminal Homicide	Forcible Rape	Assault*	Robbery	Burglary	Motor Vehicle Theft	Larceny
	Ak. State Troopers	8	14	498	12	229	118	482
2	Fairbanks Airport Police	0	0	6	0	1	3	33
0	Fairbanks Police	3	41	793	28	141	127	921
0	North Pole Police	0	4	28	3	12	14	78
8	UAF Police Dept	0	0	32	0	9	1	95
	<b>Total 2008</b>	<b>11</b>	<b>59</b>	<b>1,357</b>	<b>43</b>	<b>392</b>	<b>263</b>	<b>1,609</b>
	Ak. State Troopers	5	30	692	9	289	182	699
2	Fairbanks Airport Police	0	0	13	0	0	4	17
0	Fairbanks Police	0	62	895	47	194	92	1,126
0	North Pole Police	0	2	67	1	14	8	79
9	UAF Police Dept	0	2	12	0	5	4	83
	<b>Total 2009</b>	<b>5</b>	<b>96</b>	<b>1,679</b>	<b>57</b>	<b>502</b>	<b>290</b>	<b>2,004</b>
	Ak. State Troopers	4	22	763	13	287	144	667
2	Fairbanks Airport Police	0	0	8	0	1	0	7
0	Fairbanks Police	1	70	1,085	33	149	101	1,117
1	North Pole Police	0	2	57	1	12	7	78
0	UAF Police Dept	0	2	24	0	7	0	74
	<b>Total 2010</b>	<b>5</b>	<b>96</b>	<b>1,937</b>	<b>47</b>	<b>456</b>	<b>252</b>	<b>1,943</b>
	Ak. State Troopers	1	31	702	7	376	160	772
2	Fairbanks Airport Police	0	0	13	0	0	2	11
0	Fairbanks Police	2	17	738	33	130	76	1,026
1	North Pole Police	0	0	31	3	9	2	69
1	UAF Police Dept	0	0	17	0	4	3	64
	<b>Total 2011</b>	<b>3</b>	<b>48</b>	<b>1,501</b>	<b>43</b>	<b>519</b>	<b>243</b>	<b>1,942</b>
	Ak. State Troopers	1	8	432	10	257	70	523
2	Fairbanks Airport Police	0	0	3	0	0	1	14
0	Fairbanks Police	4	29	644	37	130	112	1,137
1	North Pole Police	0	0	24	0	15	5	53
2	UAF Police Dept	0	0	17	0	3	0	79
	<b>Total 2012</b>	<b>5</b>	<b>37</b>	<b>1,120</b>	<b>47</b>	<b>405</b>	<b>188</b>	<b>1,806</b>
	<b>% Change 2011-2012</b>	<b>66.7%</b>	<b>-22.9%</b>	<b>-25.4%</b>	<b>9.3%</b>	<b>-22.0%</b>	<b>-22.6%</b>	<b>-7.0%</b>

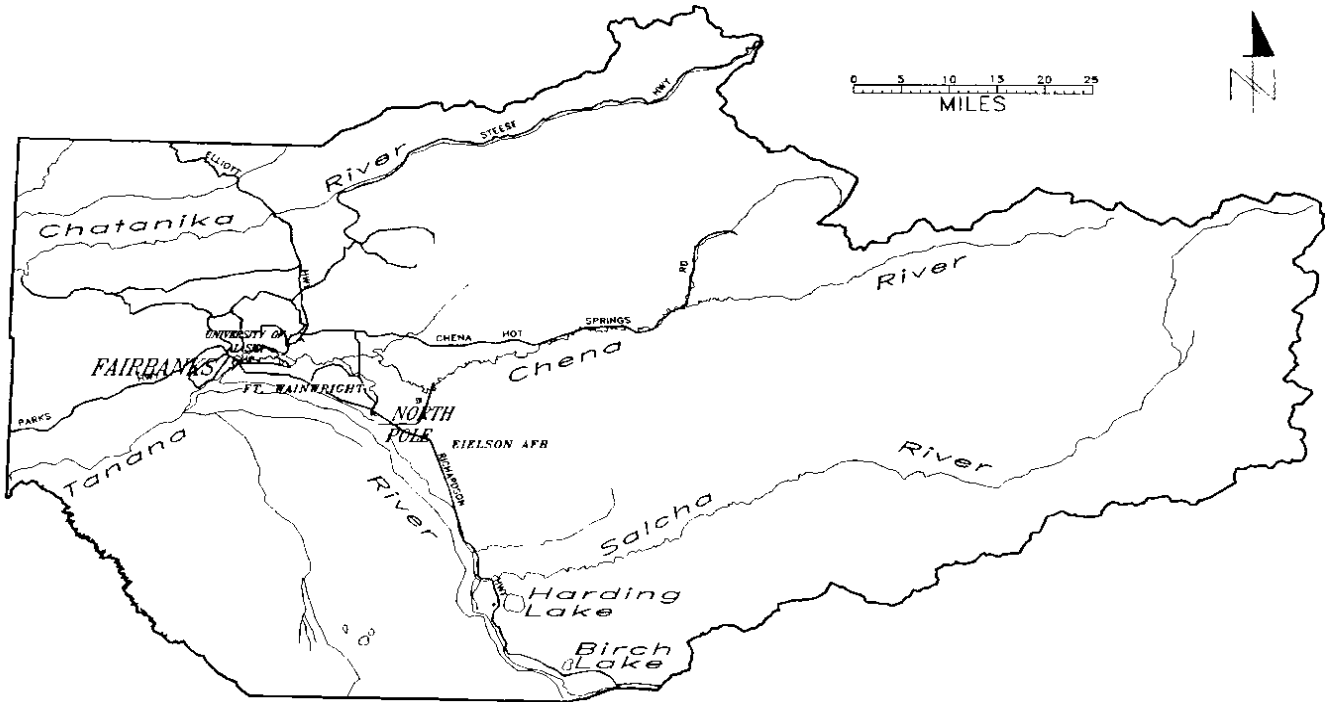
**SOURCE:** Alaska State Troopers, D Detachment, personal communications, 2008-2014; State of Alaska, Department of Public Safety, Division of Administrative Services, Information Systems 2000 to include their publication "Crime Reported in Alaska, 2011 Uniform Crime Reporting", <http://www.dps.state.ak.us/Statewide/UCR.aspx>, 2013.

**NOTE:** There is a two year lag in data availability.

\* Includes simple and aggravated assault.

\*\* 2012 numbers are preliminary and may be subject to revision.

# FNSB VICINITY MAP



Date of Incorporation: January 1, 1964

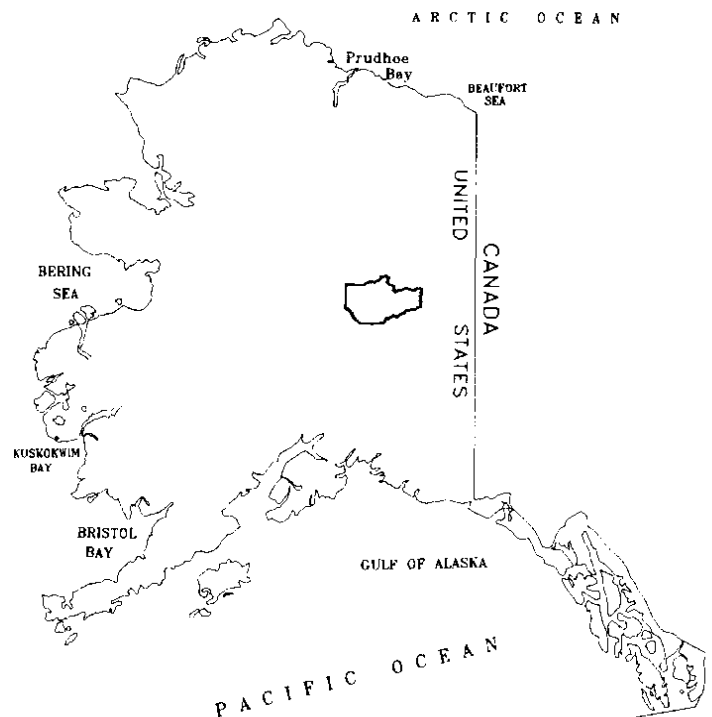
Form of Government: Second Class Borough

Type of Government: Borough Mayor, 3 yr. Term  
Assembly, 9 Members  
Elected at large, 3 yr. Terms

Population (2013)  
US Census: 100,436

Size: 7,361 square miles  
19,065 square kilometers

Certified Assessed Valuation (2013): \$8,490,768,875 (non-pipeline)  
\$ 869,679,750 (pipeline)



Fairbanks North Star Borough  
Community Research Center  
PO Box 71267  
Fairbanks, AK 99707-1267

**TO:**